



*DAMAC*







ALTTITUDE BY DE GRISOGONO

ALTTITUDE BY DE GRISOGONO



LET YOUR LIFESTYLE  
ASCEND



U D E B Y D E G R I S O G O N O

U D E B Y D E G R I S O G O N O



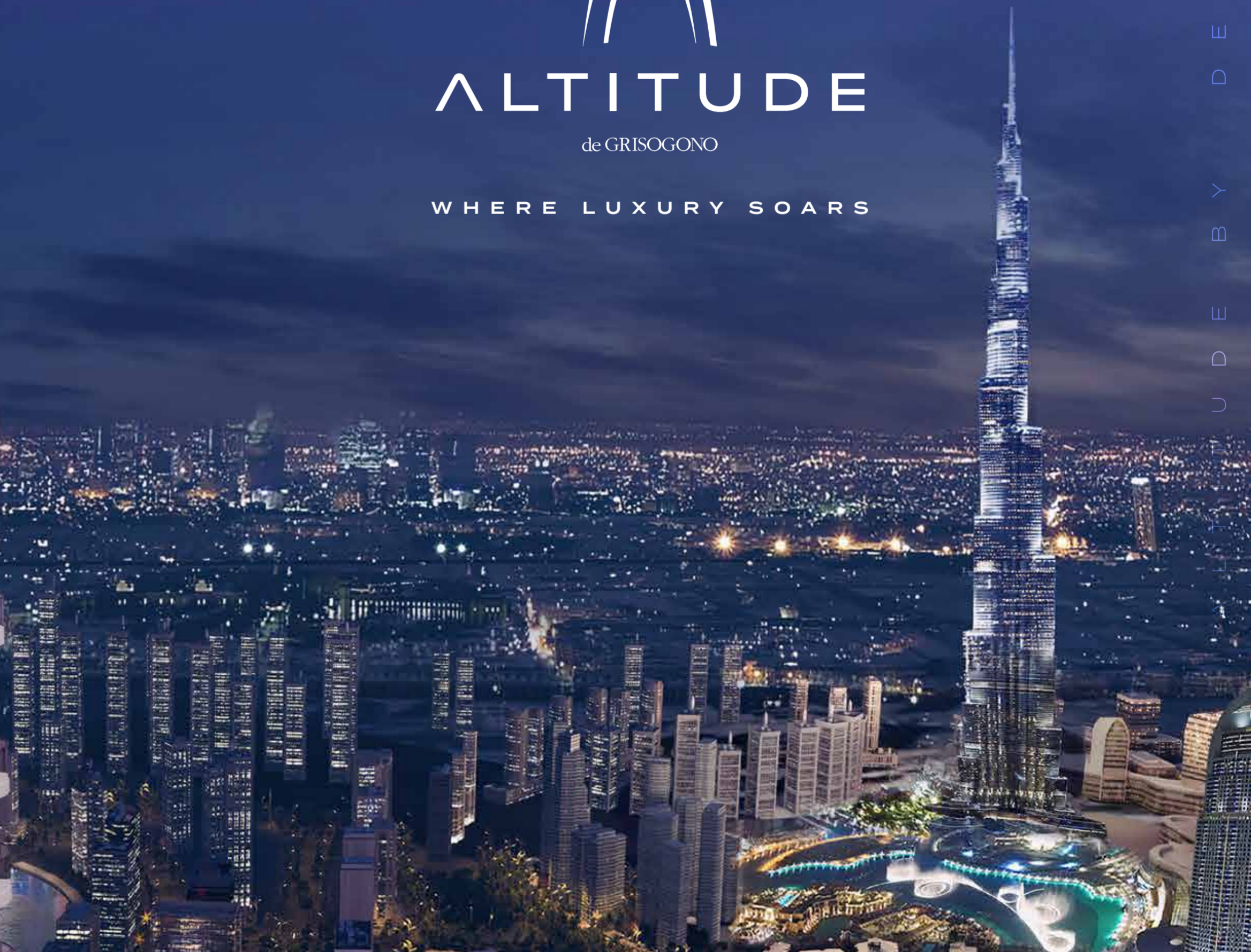
DISCOVER URBAN LIVING  
ABOVE AND BEYOND



ALTITUDE

de GRISOGONO

WHERE LUXURY SOARS







ELEVATE YOUR  
LIFE OF LUXURY IN  
BUSINESS BAY.

Overlooking the impressive Dubai Canal, ALTITUDE is only minutes away from iconic landmarks like the Burj Khalifa, Dubai Mall, and DIFC, with Dubai International Airport a short drive away.

O  
N  
O  
C  
S  
E  
R  
S  
E  
D



ALTTITUDE BY DE GRISOGONO

DUBAI ICONS  
ON THE HORIZON

ALTTITUDE BY DE GRISOGONO







ATTITUDE BY DE GRISOGONO

ATTITUDE BY DE GRISOGONO

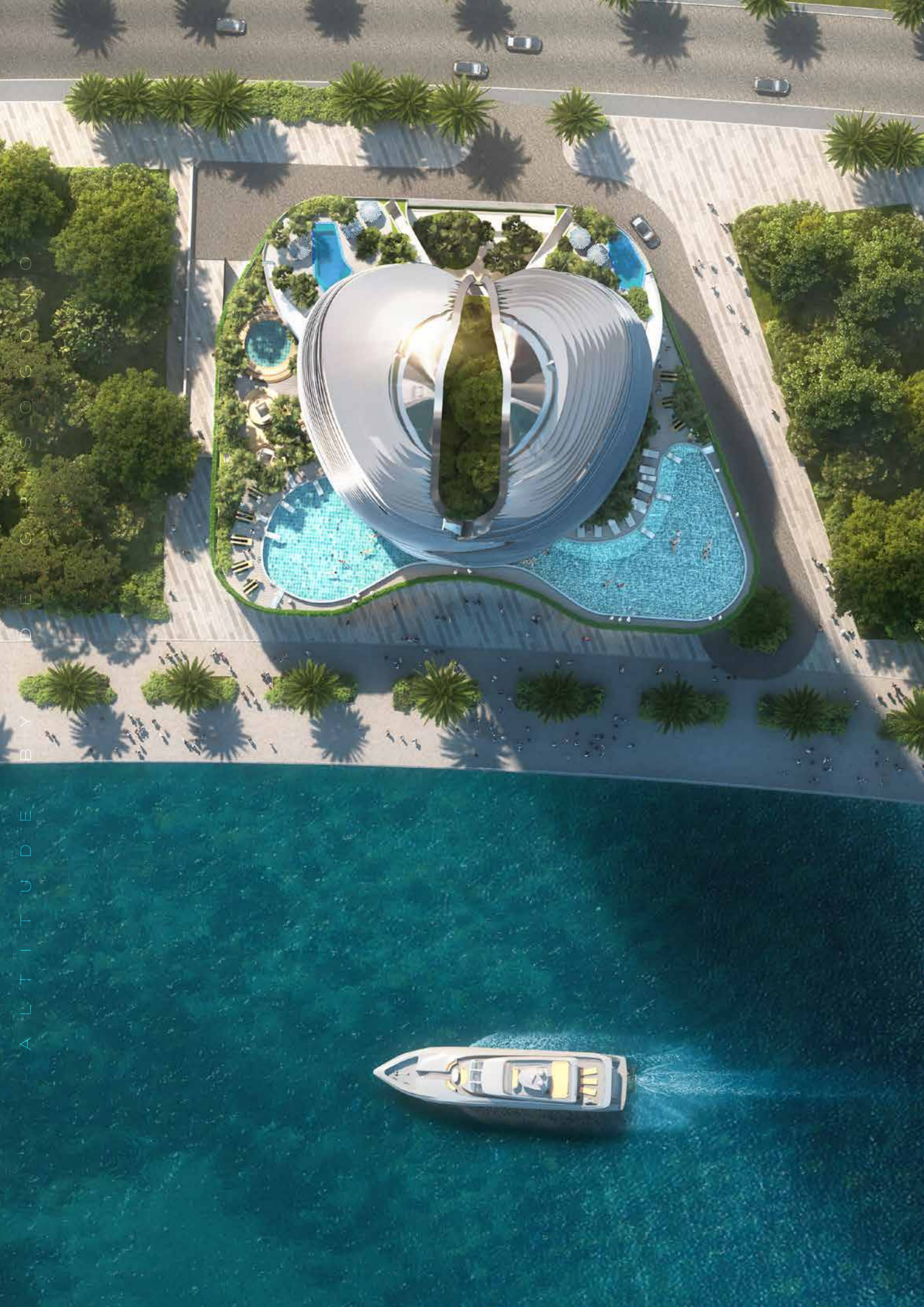




DESIGNED BY  
GRISSONNO  
ARCHITECTS

ALL RIGHTS RESERVED BY  
GRISSONNO  
ARCHITECTS





## EXPERIENCE THE ENCHANTING OPAL

A radiant gemstone known for its captivating play of colours, inspires every element of this exquisite property, inviting you to explore a sparkling and opulent world.

ALTTITUDE BY DE GRISOGONO

ALTTITUDE BY DE GRISOGONO



# THE PINNACLE OF CITY LIFE

A breathtaking promenade beckons you with a dazzling array of culinary delights and a carefully curated collection of retail brands and experiences.



THE PINNACLE OF CITY LIFE

THE PINNACLE OF CITY LIFE





ALTITUDE BY DE GRISOGONO

ALTITUDE BY DE GRISOGONO

## A MOSAIC OF ELEGANCE AWAITS

Step into Altitude's lobby, where flowing lines and iridescent accents dance with reflective surfaces, crafting a living tapestry, a prelude to the stunning lifestyle that awaits within.







BASK IN THE  
GLOW OF LUXURY

Soak up the serenity and splendour on Altitude's podium level, from lounging on solar-powered sun beds to enjoying your post-workout bliss in the pool, and experience a life well lived.





ALTTUDE BY DE GRISOGONO

ALTTUDE BY DE GRISOGONO





## NEW HEIGHTS OF WELLNESS

From a spa, salon and beauty bar that leave you looking and feeling heavenly, to soothing hydrotherapy and dedicated temperature-controlled flotation pods, the Altitude lifestyle will see your worries drift away.



ALTITUDE BY DE GRISOGONO





ARCHITECTURE BY DELICIOUS COGNAC

ARCHITECTURE BY DELICIOUS COGNAC









ALL RIGHTS RESERVED BY DE GRIPSON

ALL RIGHTS RESERVED BY DE GRIPSON

# RELAXATION THAT FEELS LIMITLESS

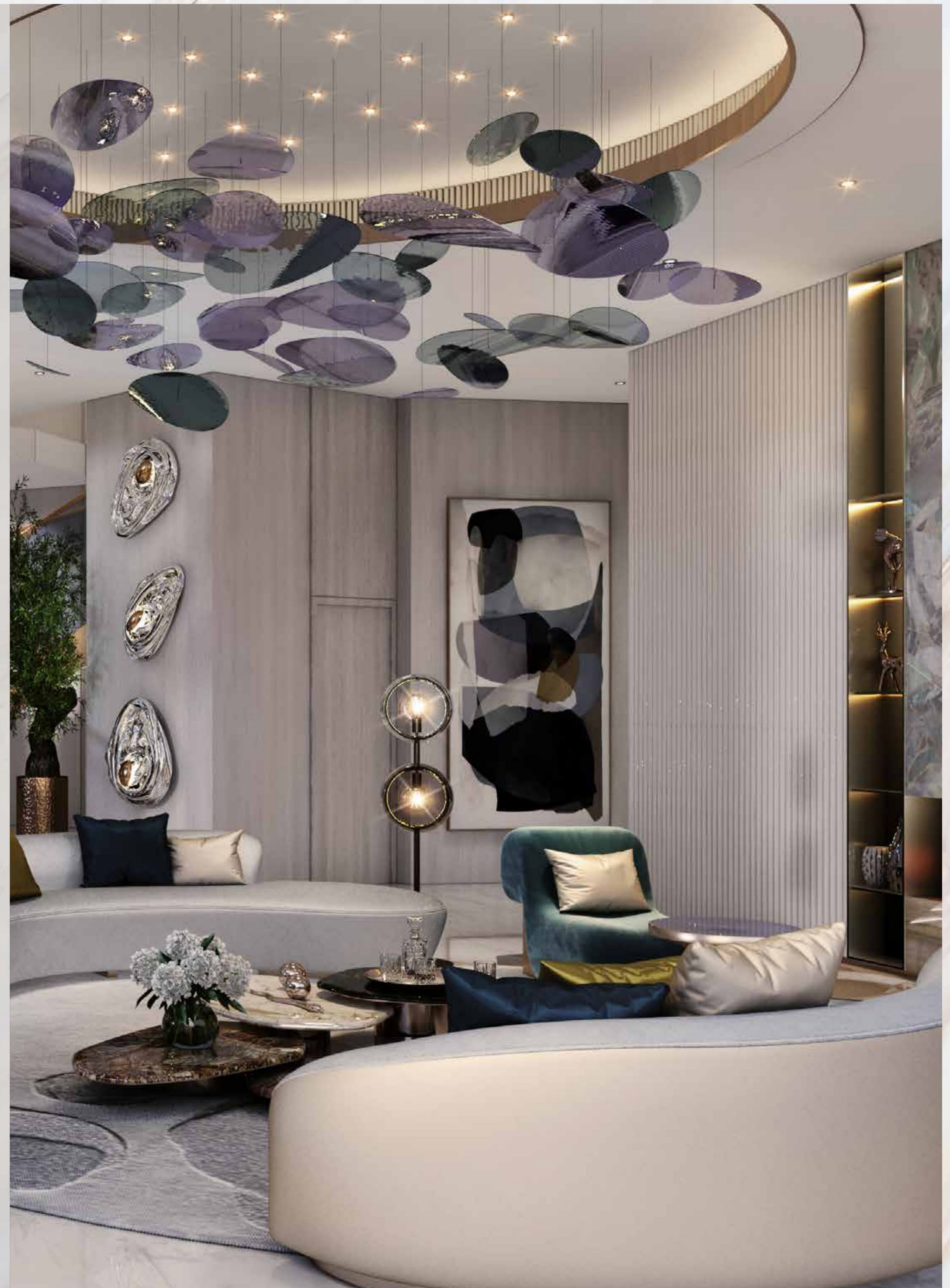
For moments beyond your imagination, relax by the pool in pods equipped and dedicated to star gazing, each and every night.





A CANVAS OF  
REFINED LIVING

Altitude's luxury apartments wonderfully combine neutral tones, natural light, clean lines and luxurious textures to create a play of colour that inspires a crescendo of comfort and sophistication.





ALTA  
DEBY  
GREGORIONO



ALTA  
DEBY  
GREGORIONO

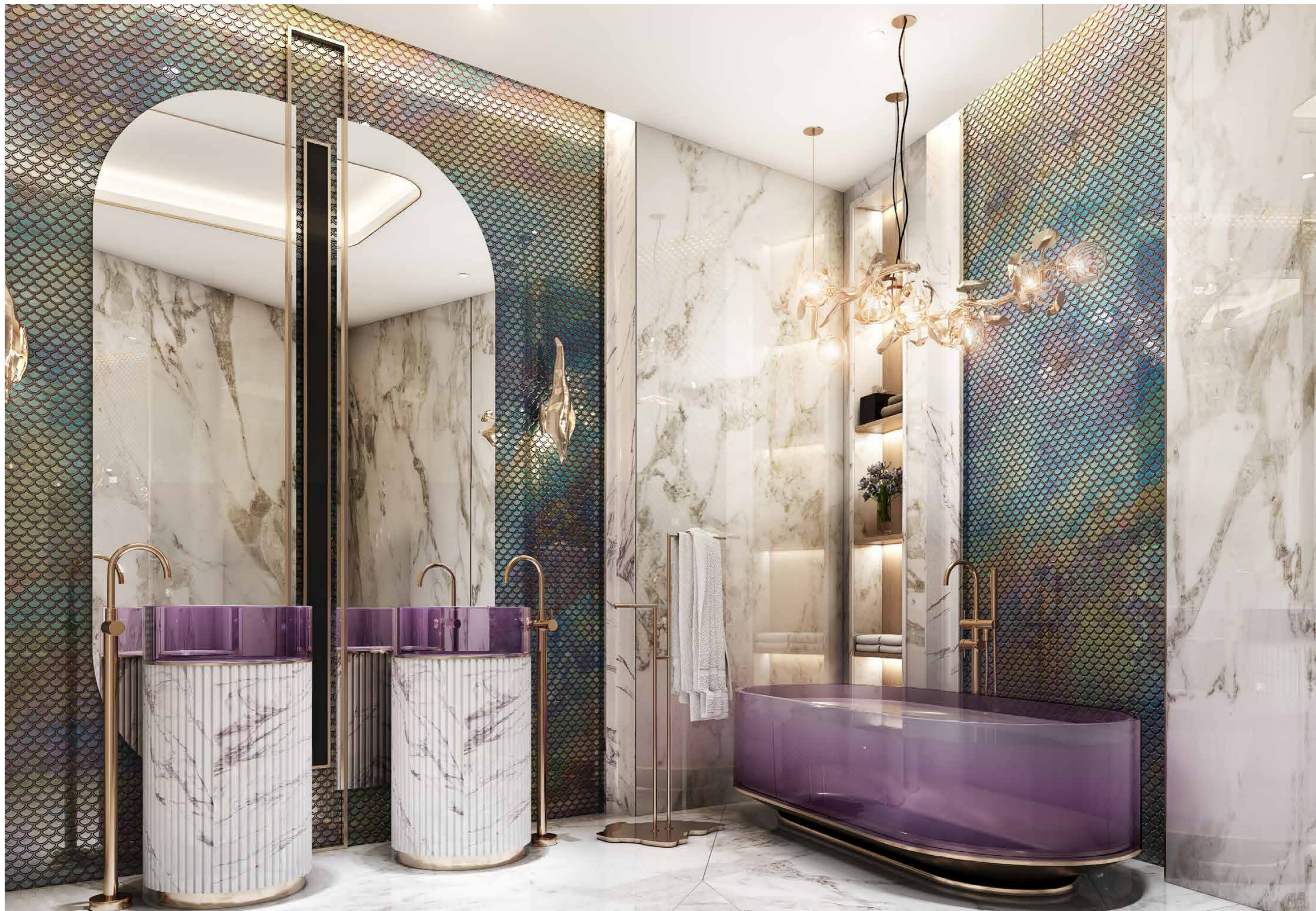


















# STUDIO

TYPE A1-A6



ST A1, A2, A3, A4, A5, A6



LEVELS 2-7

# STUDIO

TYPE B1-B8



ST B1, B2, B3, B4, B5, B6, B7, B8



LEVELS 2-9



# STUDIO

TYPE C1



LEVELS 2-9

# STUDIO

TYPE C1M



LEVELS 2-9



# STUDIO

TYPE D1



LEVELS 2-9

# STUDIO

TYPE D1M

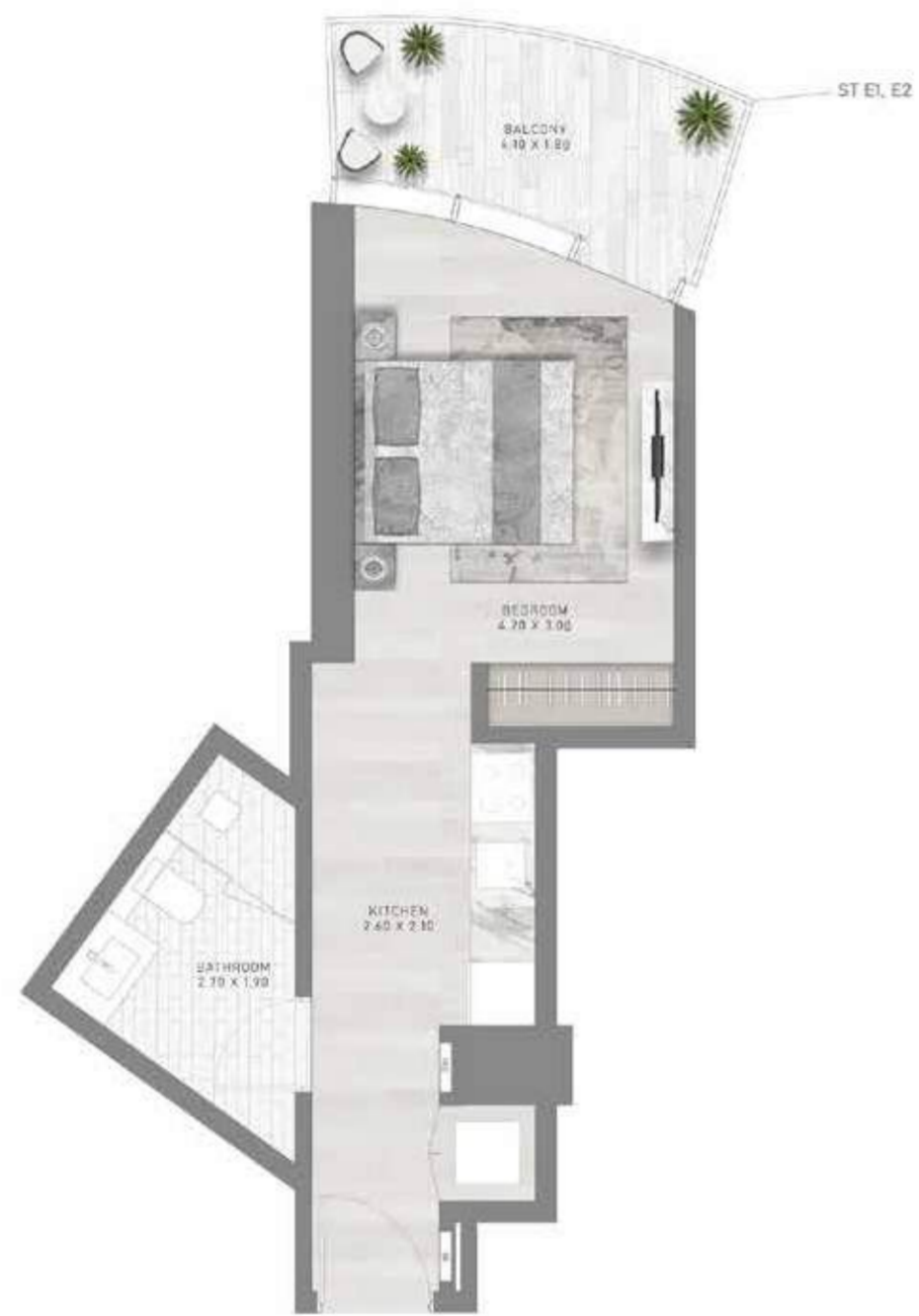


LEVELS 2-9



# STUDIO

TYPE E1-E2



LEVELS 8-9



A L T I T U D E B Y D E G R I S O G G O N O

A L T I T U D E B Y D E G R I S O G G O N O



# STUDIO

TYPE F1-F5



LEVEL 10

LEVELS 11-14

# STUDIO

TYPE F1M-F5M



LEVEL 10

LEVELS 11-14



# STUDIO

TYPE G1-G5

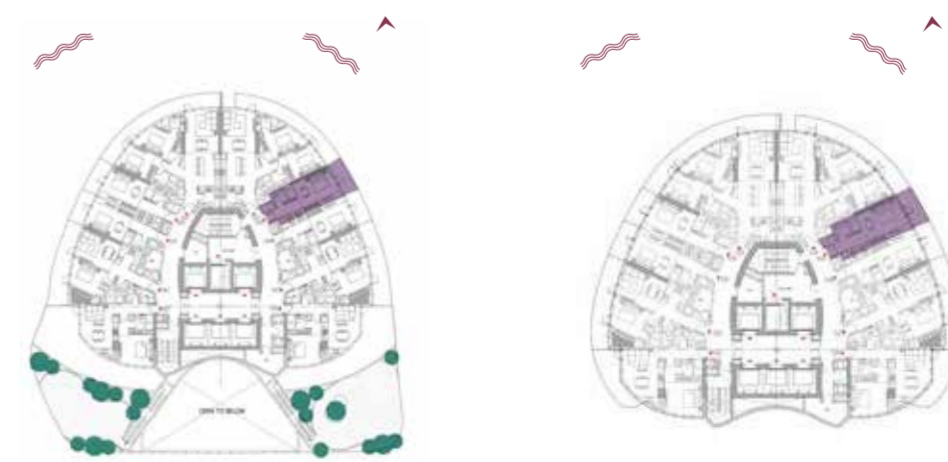
# STUDIO

TYPE G1M-G5M



LEVEL 10

LEVELS 11-14



LEVEL 10

LEVELS 11-14

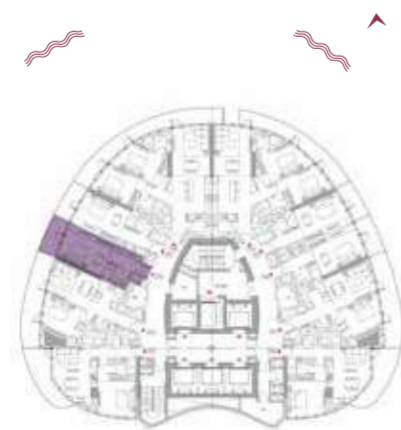
A L T I T U D E B Y D E G R I S O O G O N O

A L T I T U D E B Y D E G R I S O O G O N O



# STUDIO

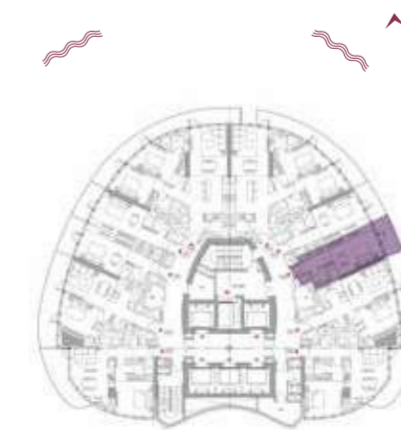
TYPE H1-H3



LEVELS 15-17

# STUDIO

TYPE H1M-H3M

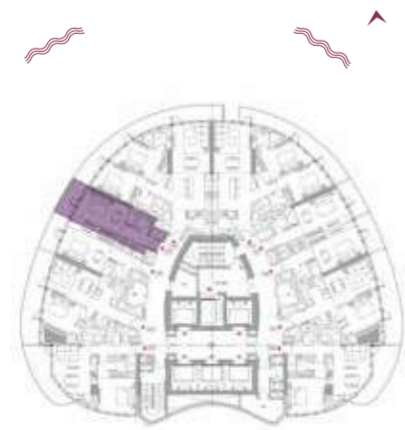


LEVELS 15-17



# STUDIO

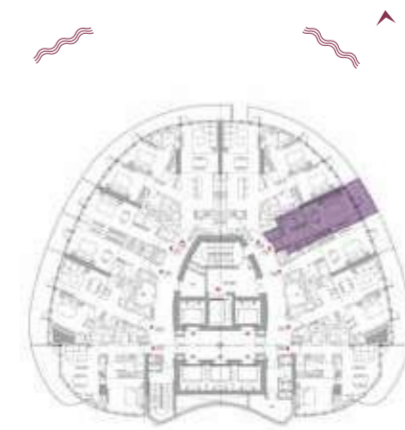
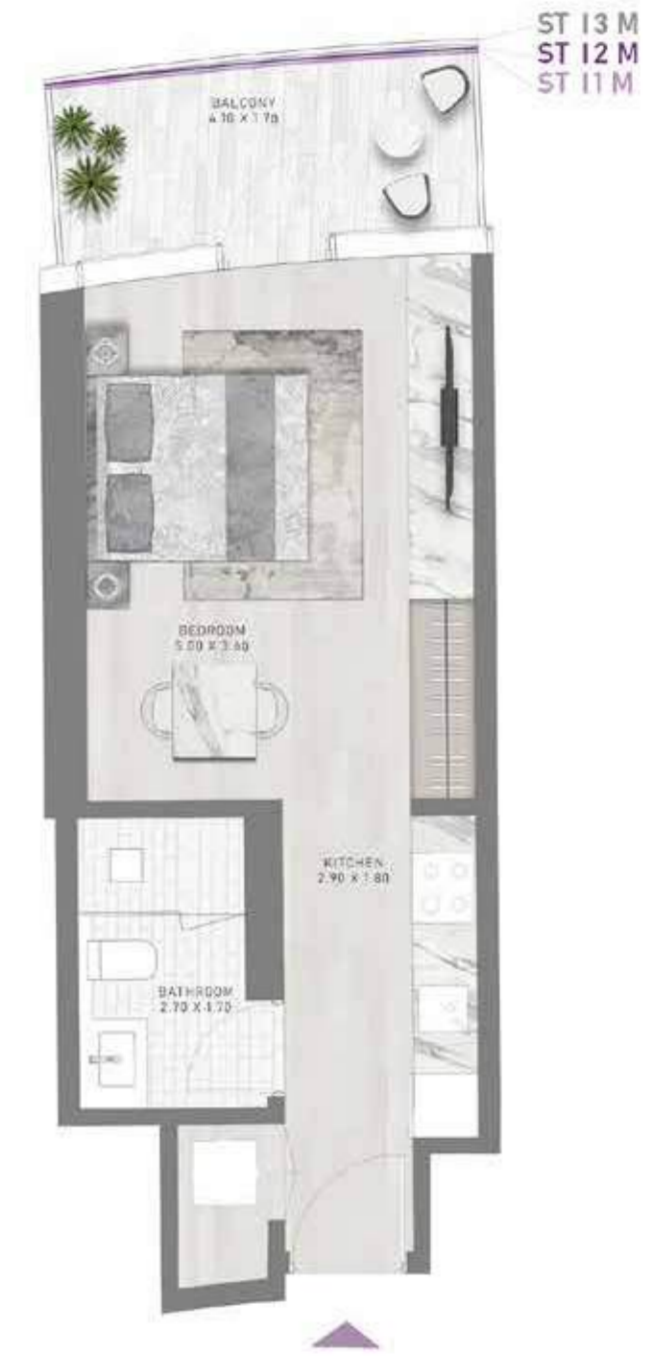
TYPE I1-I3



LEVELS 15-17

# STUDIO

TYPE I1M-I3M



LEVELS 15-17



# 1-BEDROOM

TYPE A1



LEVELS 2-9

# 1-BEDROOM

TYPE A1M



LEVELS 2-9



# 1-BEDROOM

TYPE B1-B8



LEVELS 2-9



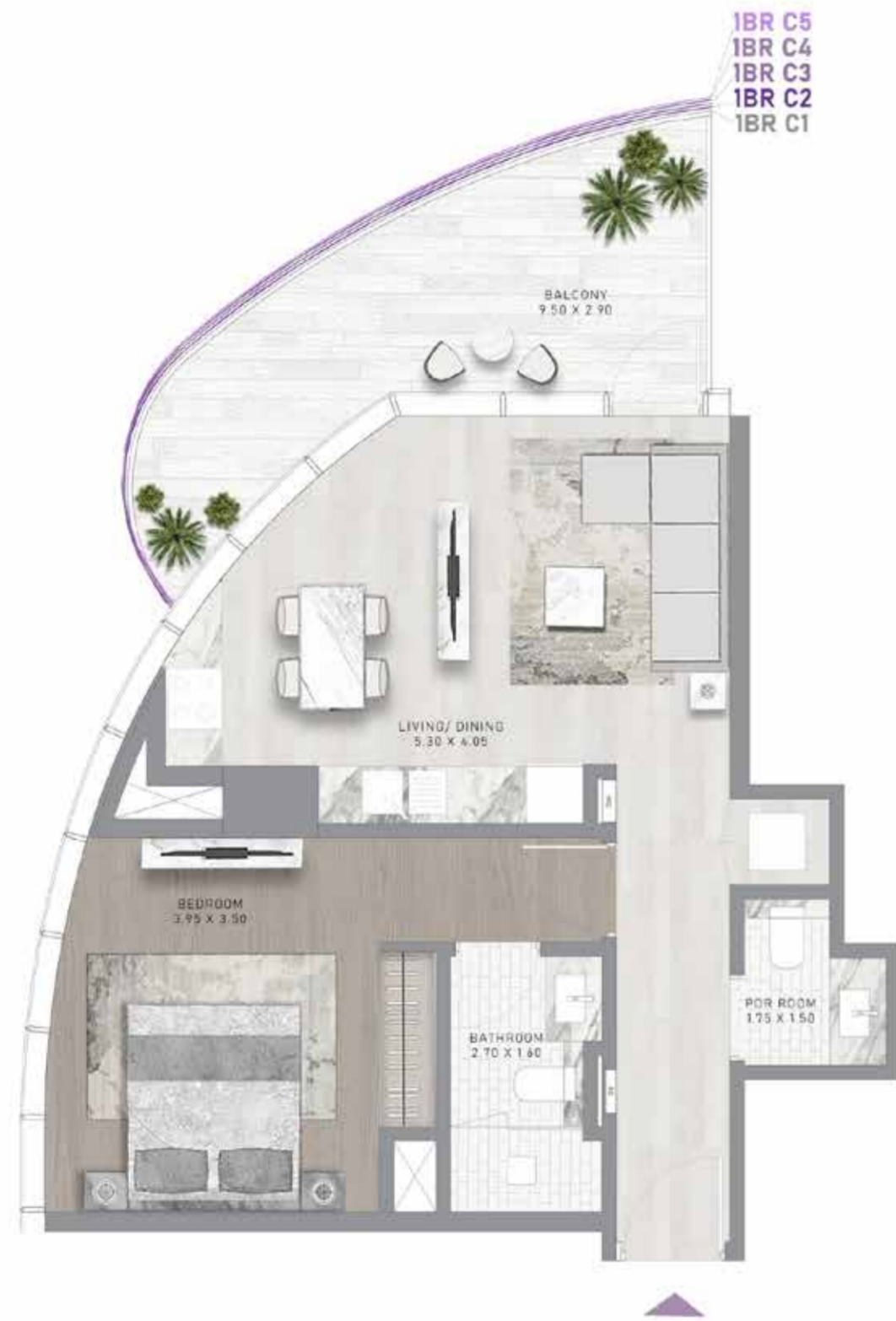
AL TITUDE BY DE GRISOGONO

AL TITUDE BY DE GRISOGONO

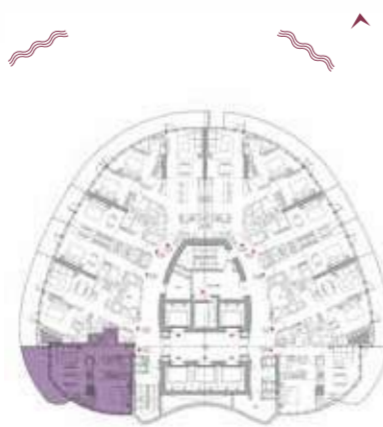


# 1-BEDROOM

TYPE C1-C5



LEVEL 10



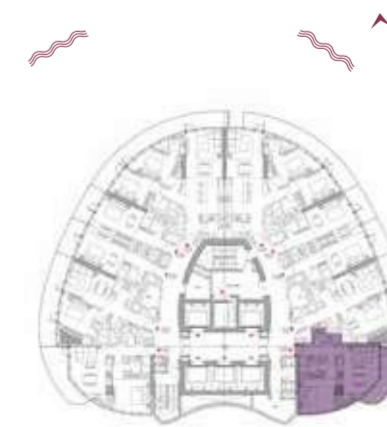
LEVELS 11-14

# 1-BEDROOM

TYPE C1M-C5M



LEVEL 10



LEVELS 11-14

A L T I T U D E B Y D E G R I S O O G O N O

A L T I T U D E B Y D E G R I S O O G O N O

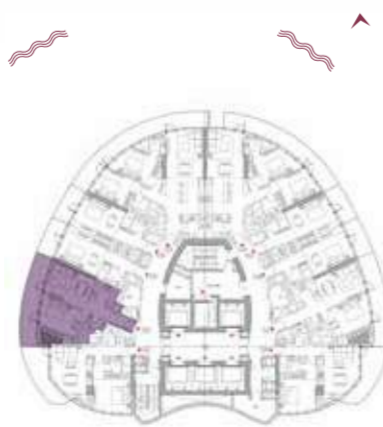


# 1-BEDROOM

TYPE D1-D5



LEVEL 10



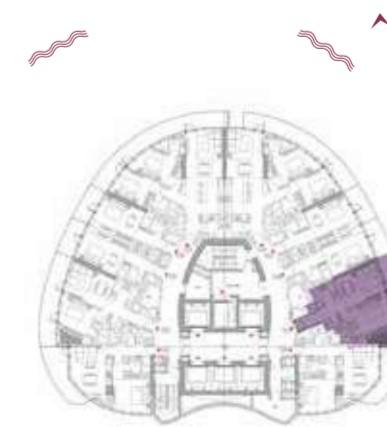
LEVELS 11-14

# 1-BEDROOM

TYPE D1M-D5M



LEVEL 10

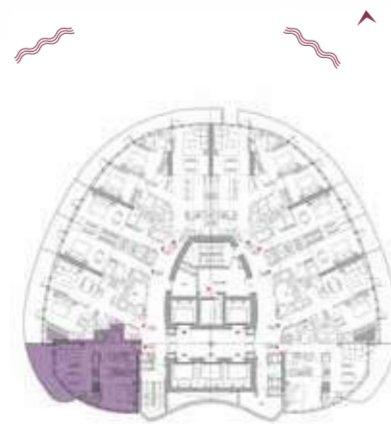
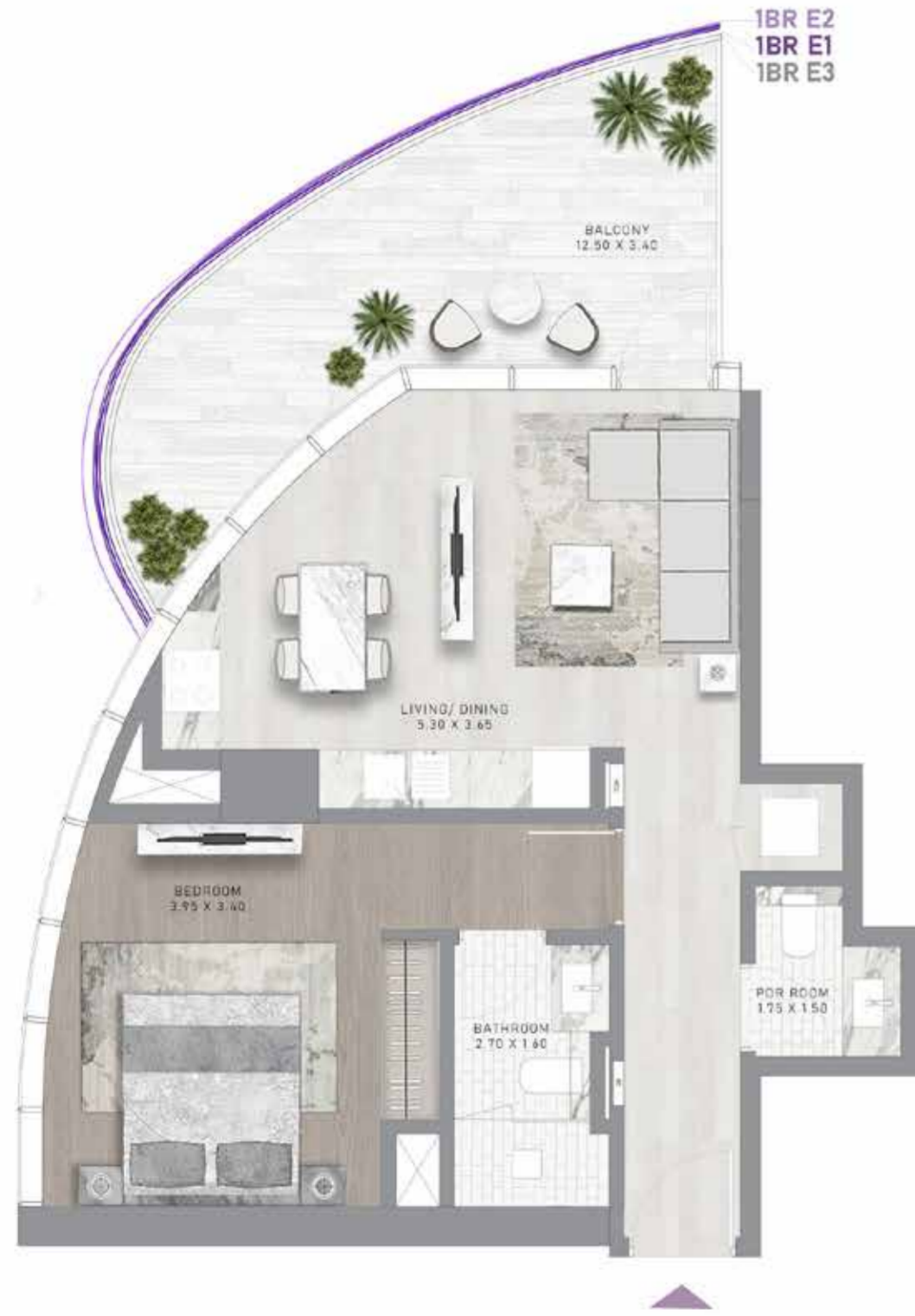


LEVELS 11-14



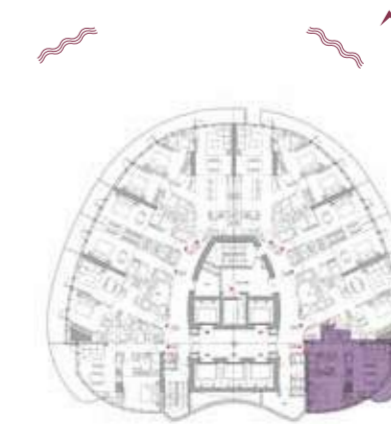
# 1-BEDROOM

TYPE E1-E3



# 1-BEDROOM

TYPE E1M-E3M



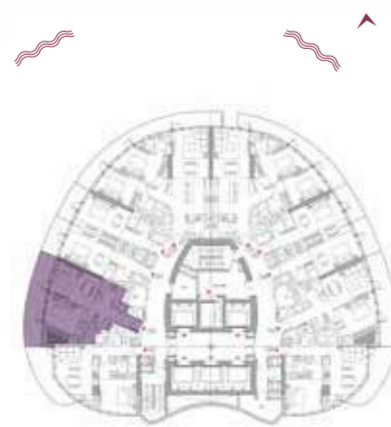
A L T I T U D E B Y D E G R I S O O G O O N O

A L T I T U D E B Y D E G R I S O O G O O N O



# 1-BEDROOM

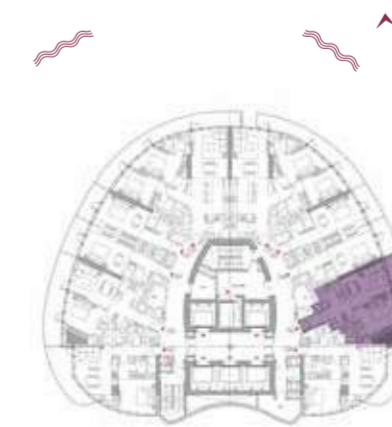
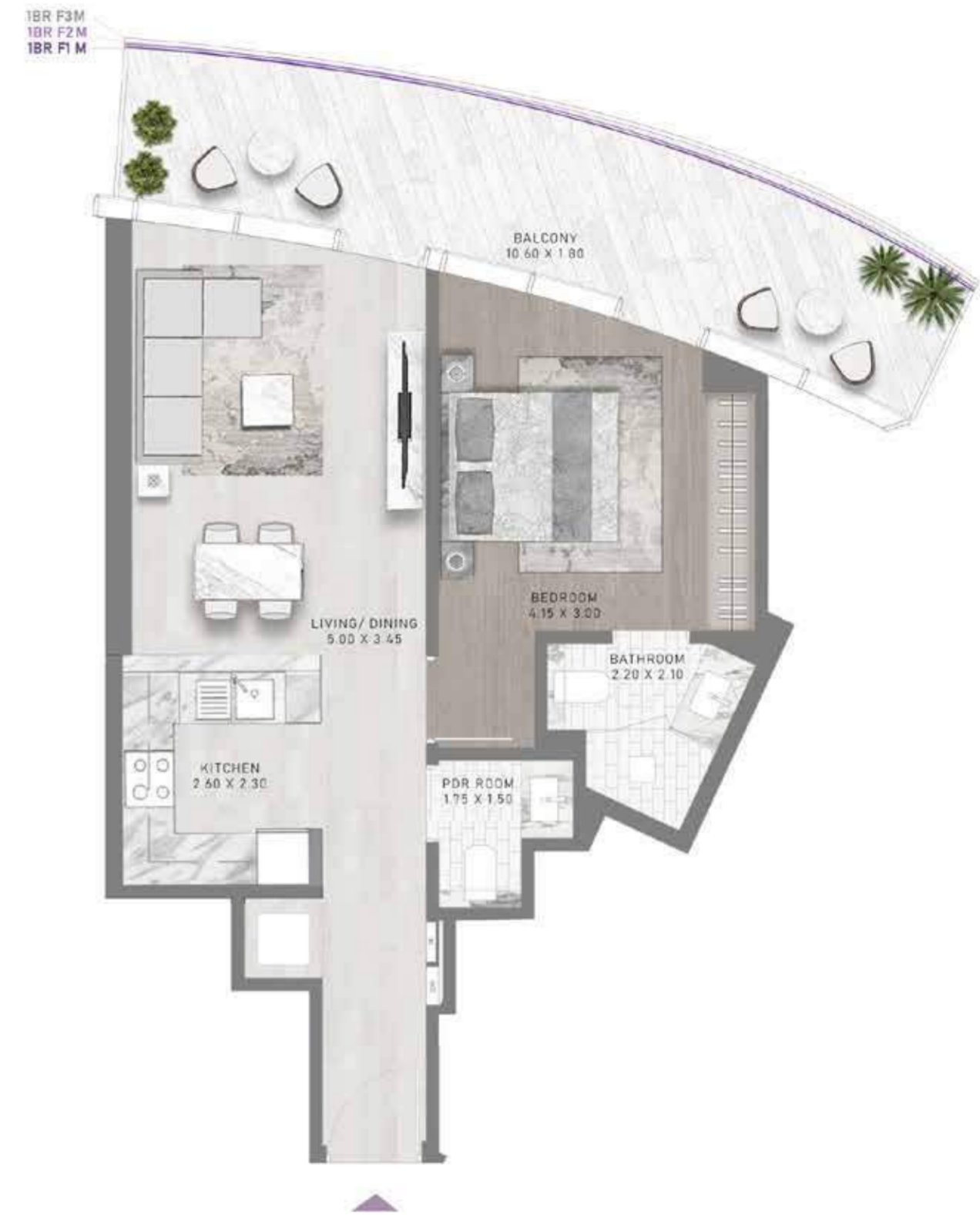
TYPE F1-F3



LEVELS 15-17

# 1-BEDROOM

TYPE F1M-F3M

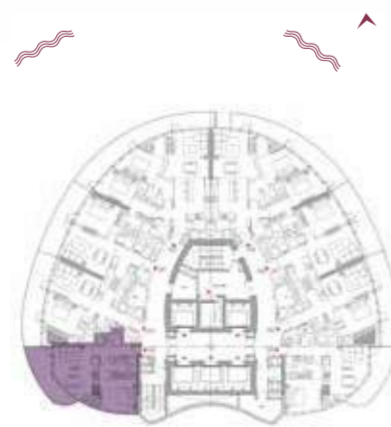


LEVELS 15-17



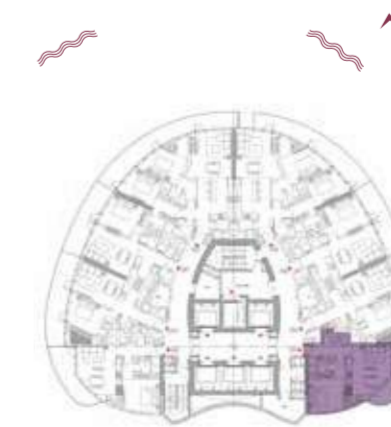
# 1-BEDROOM

TYPE G1-G3



# 1-BEDROOM

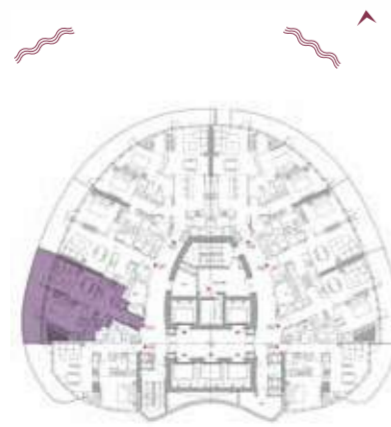
TYPE G1M-G3M





# 1-BEDROOM

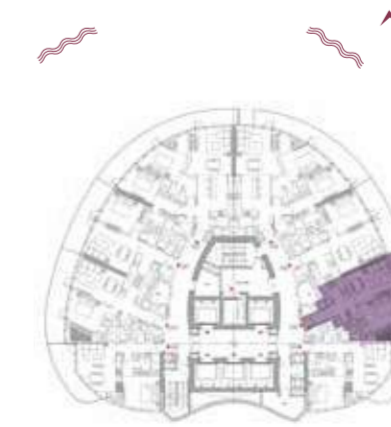
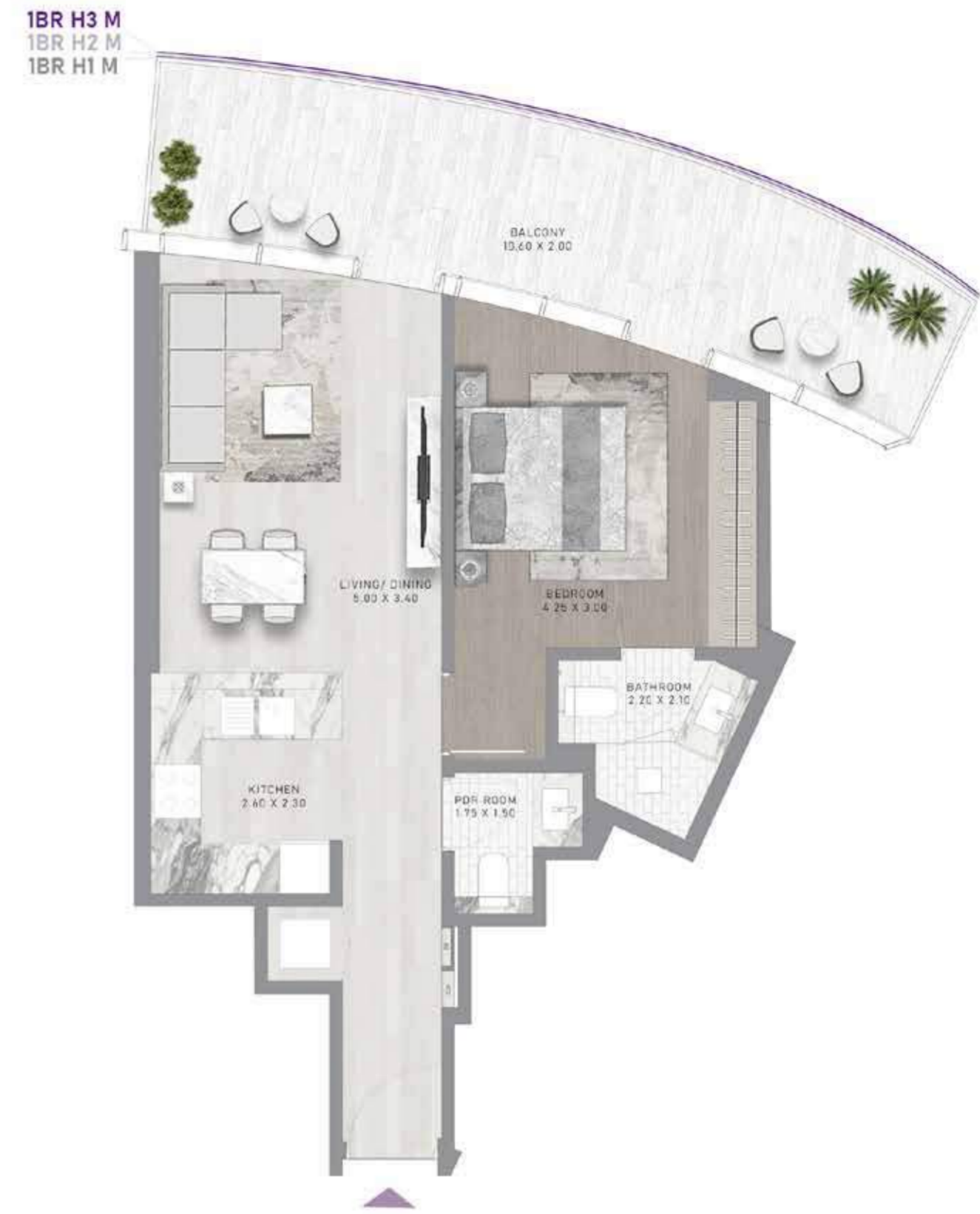
TYPE H1-H3



LEVELS 19-21

# 1-BEDROOM

TYPE H1M-H3M



LEVELS 19-21

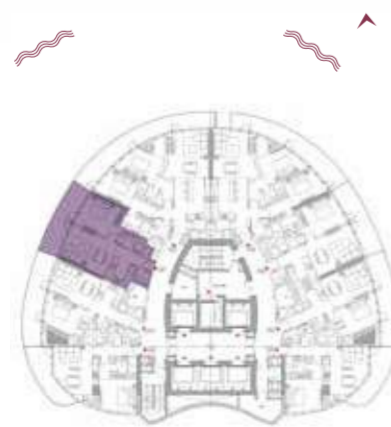
A L T I T U D E B Y D E G R I S O O G N O

O N O G R I S O O G N O D E B Y D E G R I S O O G N O



# 1-BEDROOM

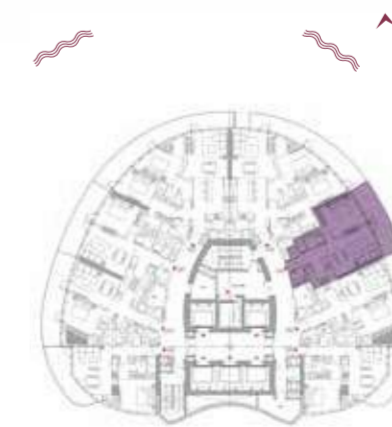
TYPE I1-13



LEVELS 19-21

# 1-BEDROOM

TYPE I1M-13M



LEVELS 19-21

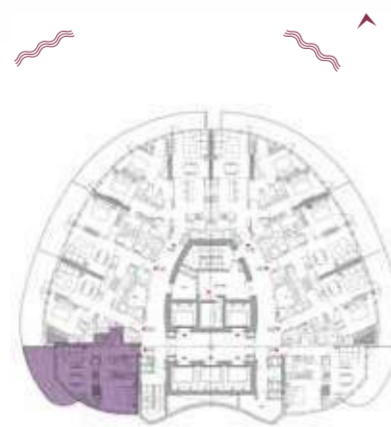
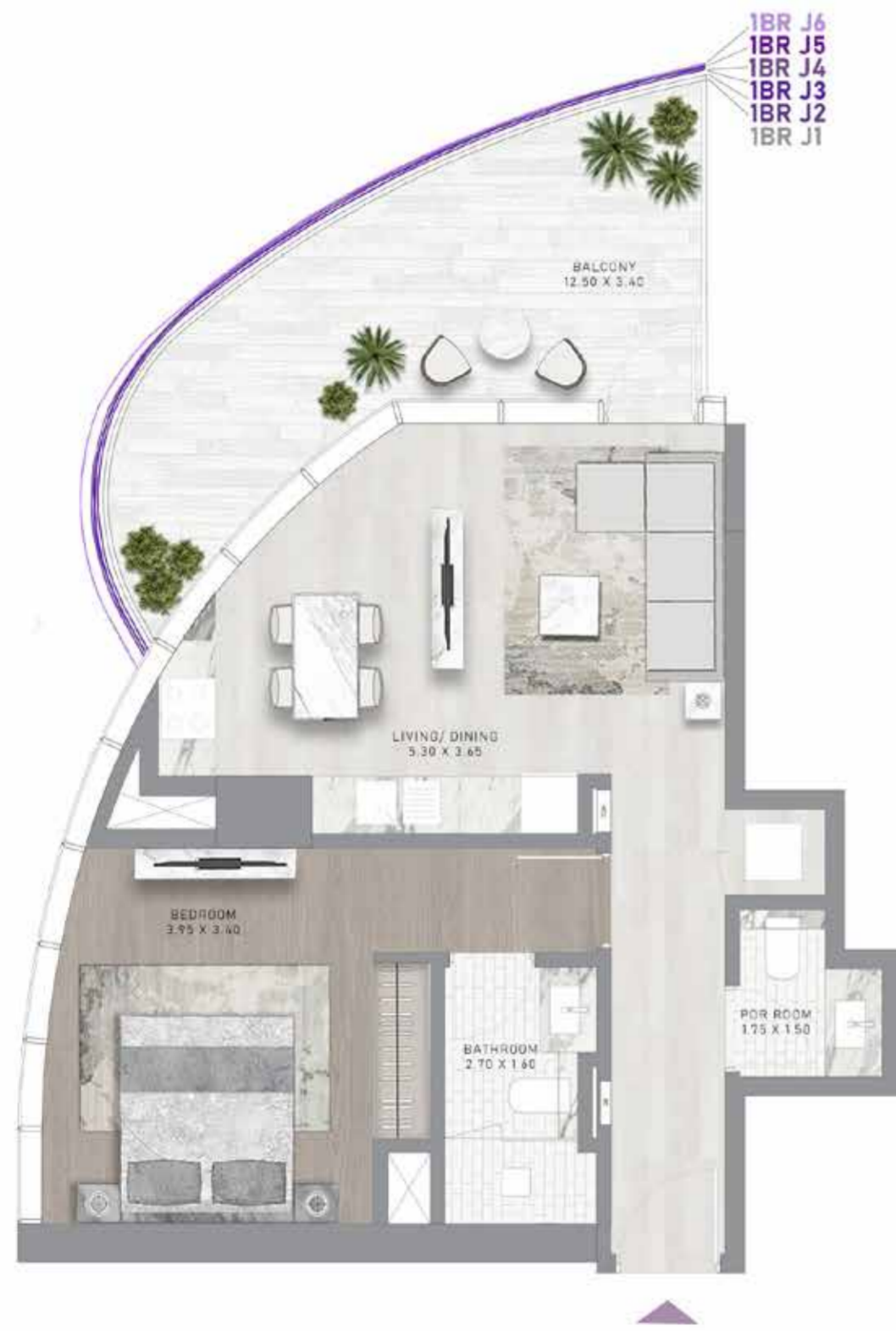
A L T I T U D E B Y D E G R I S O O G O N O

A L T I T U D E B Y D E G R I S O O G O N O



# 1-BEDROOM

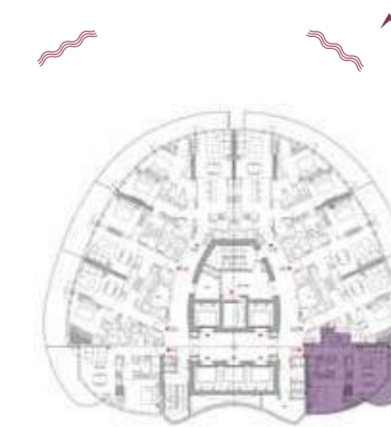
TYPE J1-J6



LEVELS 22-27

# 1-BEDROOM

TYPE J1M-J6M

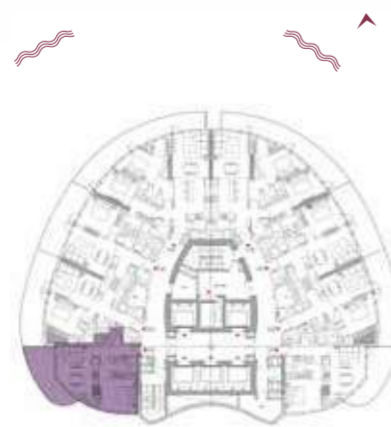
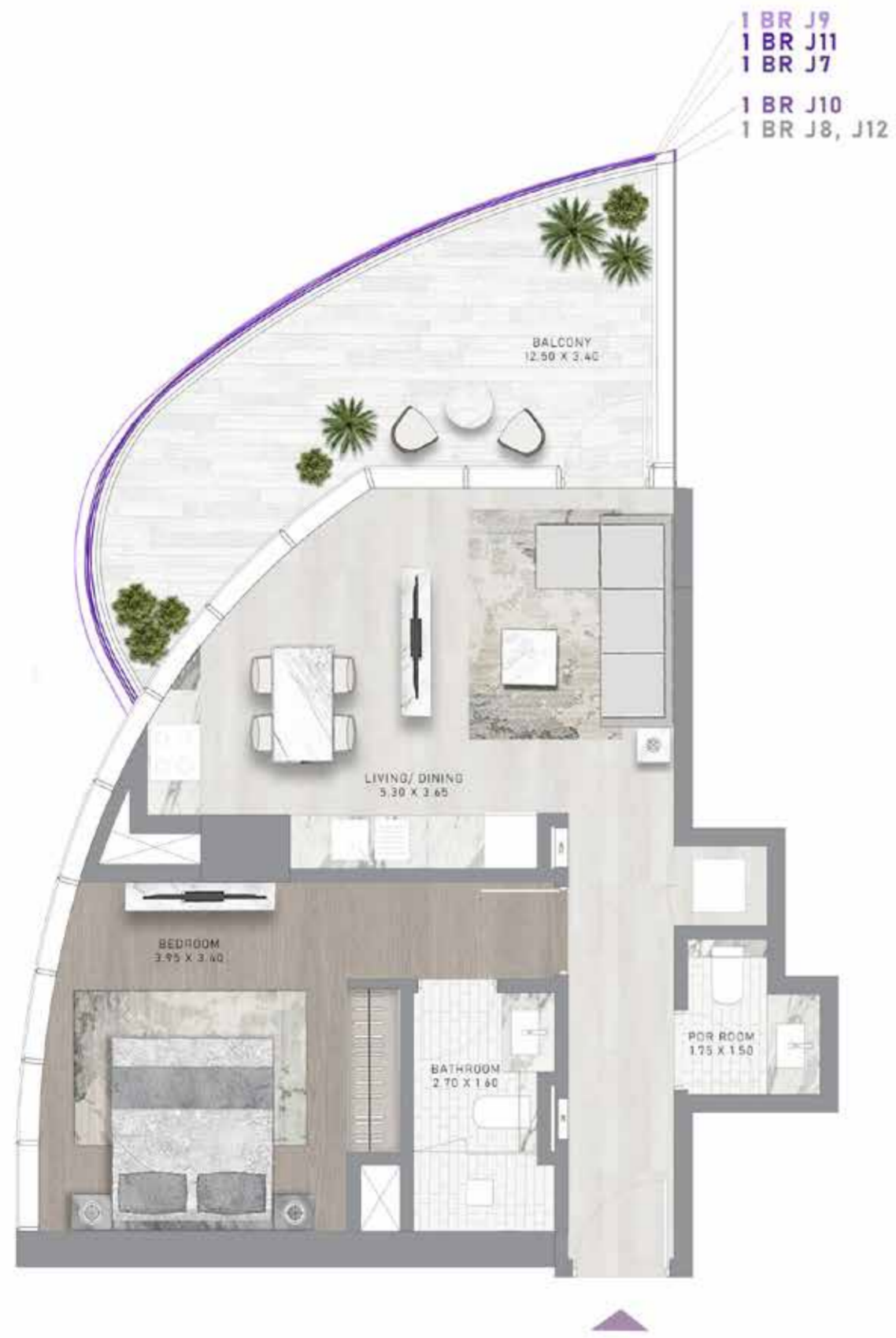


LEVELS 22-27



# 1-BEDROOM

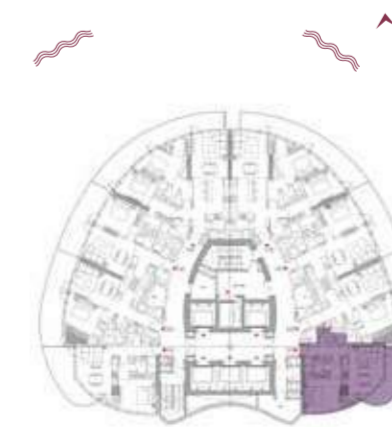
TYPE J7-J12



LEVELS 28-33

# 1-BEDROOM

TYPE J7M-J12M

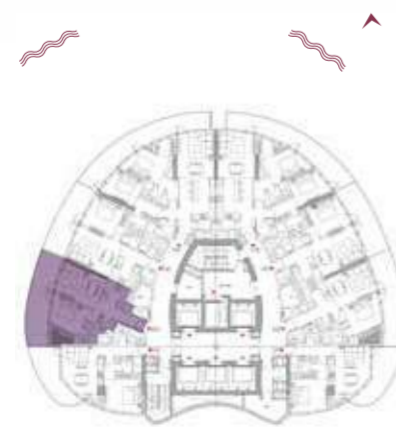
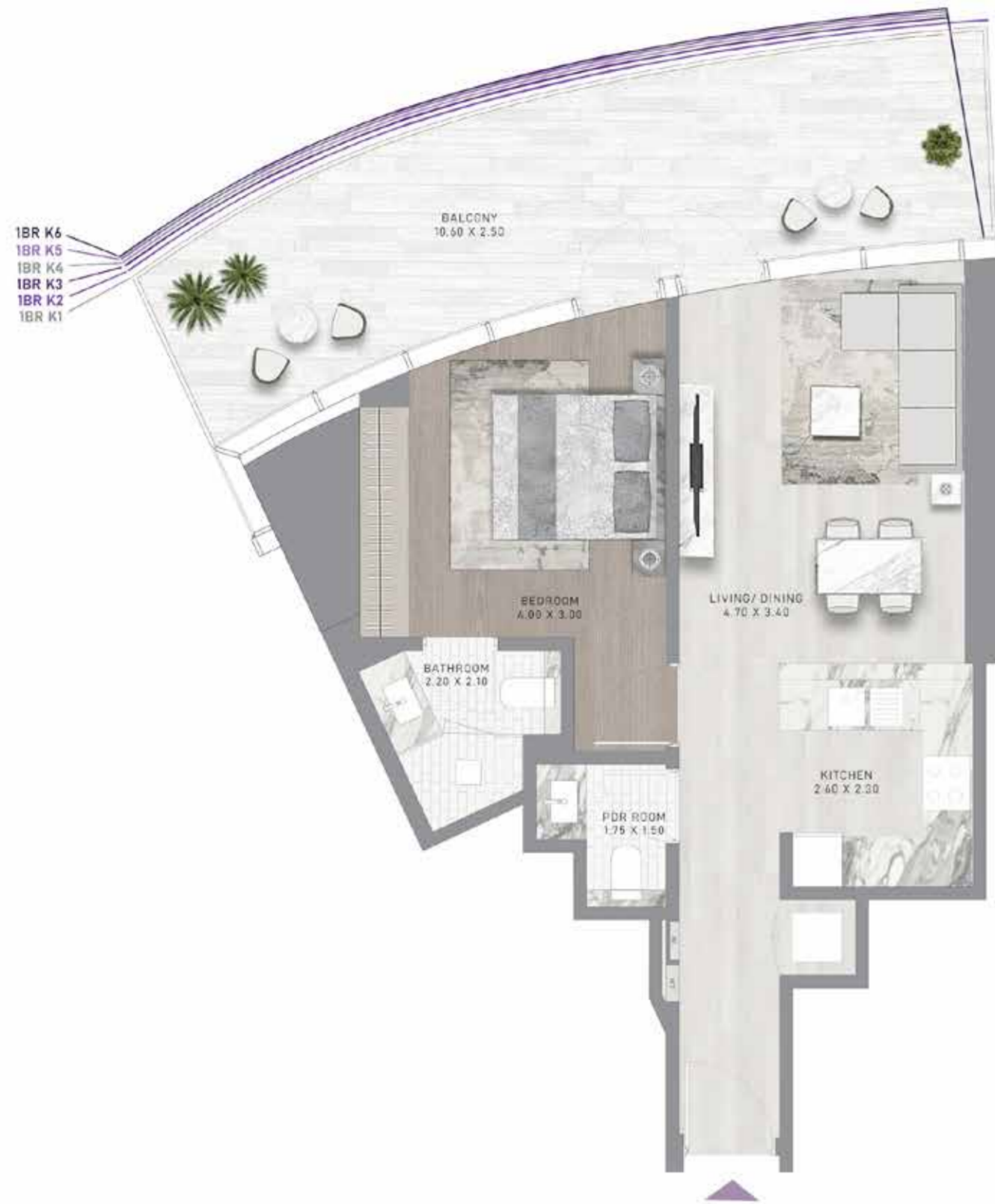


LEVELS 28-33



# 1-BEDROOM

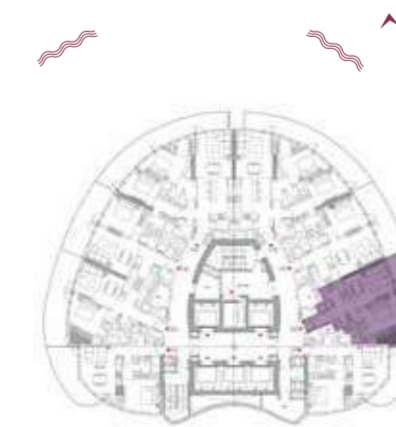
TYPE K1-K6



LEVELS 22-27

# 1-BEDROOM

TYPE K1M-K6M

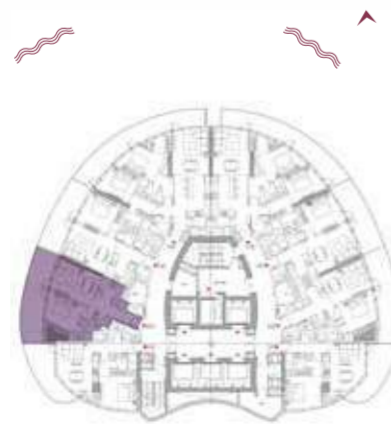


LEVELS 22-27



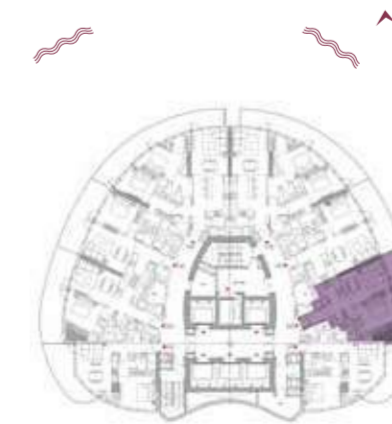
# 1-BEDROOM

TYPE K7-K12



# 1-BEDROOM

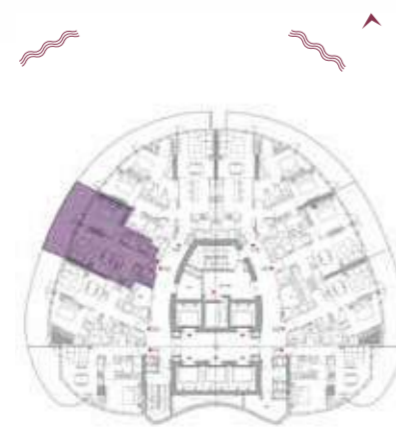
TYPE K7M-K12M





# 1-BEDROOM

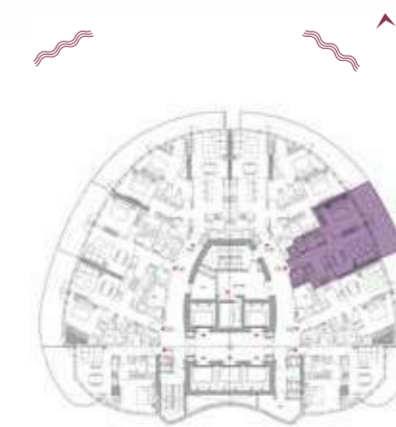
TYPE L1-L6



LEVELS 22-27

# 1-BEDROOM

TYPE L1M-L6M



LEVELS 22-27

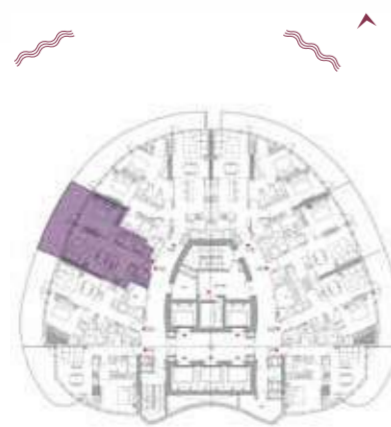
A L T I T U D E B Y D E G R I S O O G N O N O

A L T I T U D E B Y D E G R I S O O G N O N O



# 1-BEDROOM

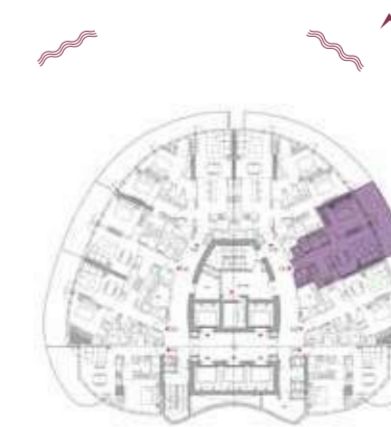
TYPE L7-L12



LEVELS 28-33

# 1-BEDROOM

TYPE L7M-L12M



LEVELS 28-33



# 1-BEDROOM

TYPE M1



LEVEL P3

# 1-BEDROOM

TYPE M1-M



LEVEL P3



# 1-BEDROOM

TYPE N1



LEVEL P3

# 1-BEDROOM

TYPE N1-M



LEVEL P3

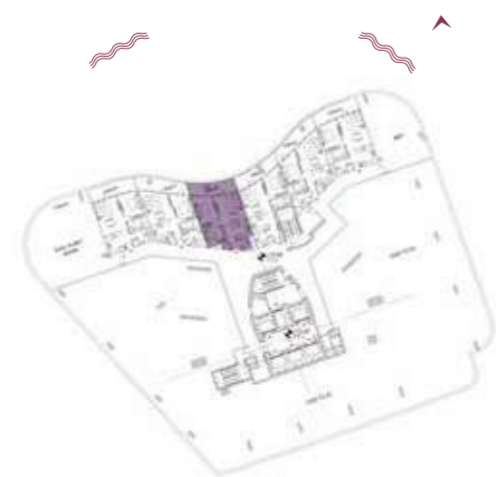
A L T I T U D E B Y D E G R I S O O G O N O

A L T I T U D E B Y D E G R I S O O G O N O



# 1-BEDROOM

TYPE O1



LEVEL P3

# 1-BEDROOM

TYPE P1



LEVEL P3

A L T I T U D E B Y D E G R I S O O G O N O

A L T I T U D E B Y D E G R I S O O G O N O



# 2-BEDROOM

TYPE A1-A6



A L T I T U D E B Y D E G R I S O G O N O



# 2-BEDROOM

TYPE B1-B8



LEVELS 2-9

# 2-BEDROOM

TYPE B1M-B8M



LEVELS 2-9

A L T I T U D E B Y D E G R I S O O G O N O

A L T I T U D E B Y D E G R I S O O G O N O



# 2-BEDROOM

TYPE C1-C6



LEVELS 2-7



A L T I T U D E B Y D E G R I S O O G O N O



# 2-BEDROOM

TYPE D1



LOWER



UPPER



TERRACE



LEVEL 8



LEVEL 9



LEVEL 10

A L T I T U D E B Y D E G R I S O O G O N O

A L T I T U D E B Y D E G R I S O O G O N O



# 2-BEDROOM

TYPE E1



LOWER



UPPER



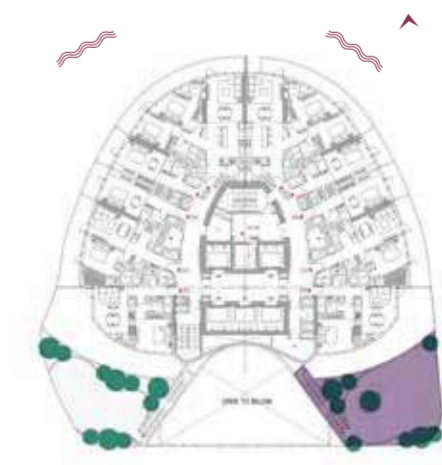
TERRACE



LEVEL 8



LEVEL 9



LEVEL 10

A L T I T U D E B Y D E G R I S O O G O N O

A L T I T U D E B Y D E G R I S O O G O N O

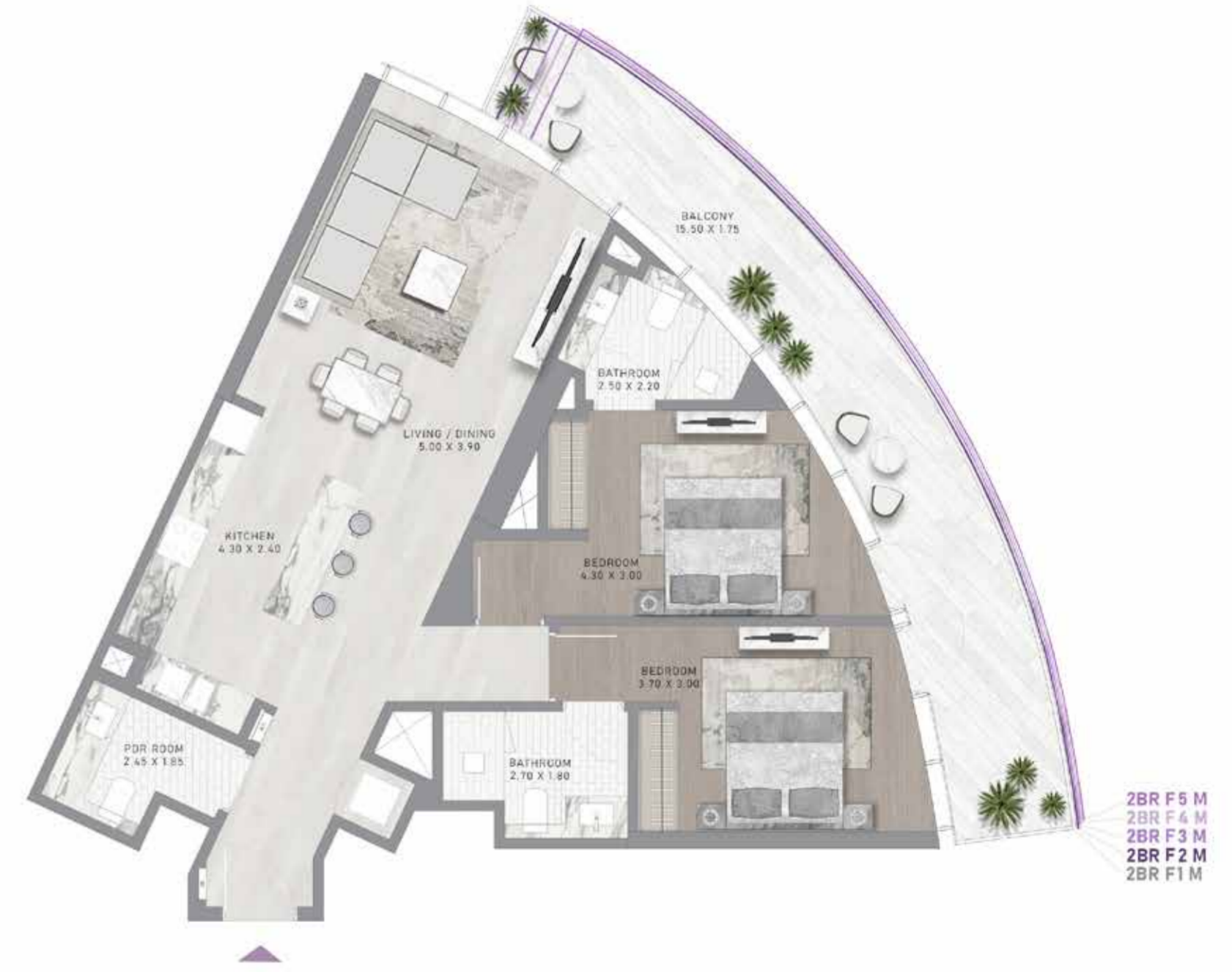


# 2-BEDROOM

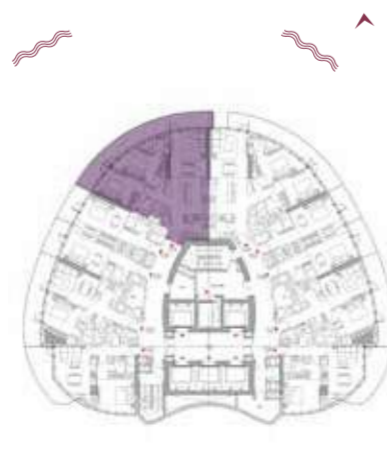
TYPE F1-F5

# 2-BEDROOM

TYPE F1M-F5M



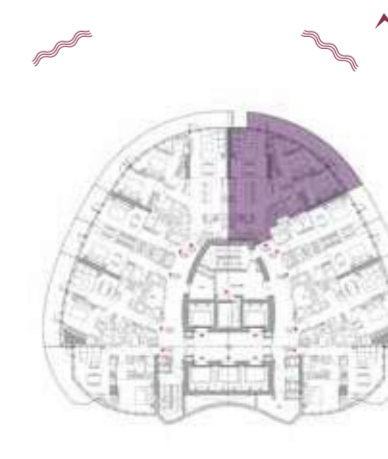
LEVEL 10



LEVELS 11-14



LEVEL 10



LEVELS 11-14

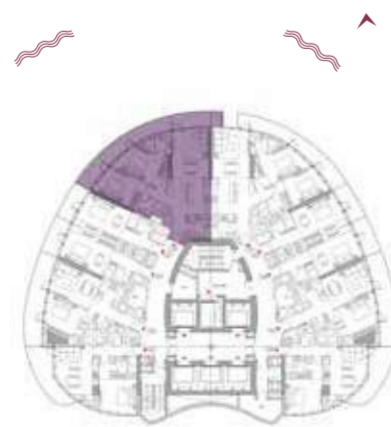
A L T I T U D E B Y D E G R I S O O G O O N O

A L T I T U D E B Y D E G R I S O O G O O N O



# 2-BEDROOM

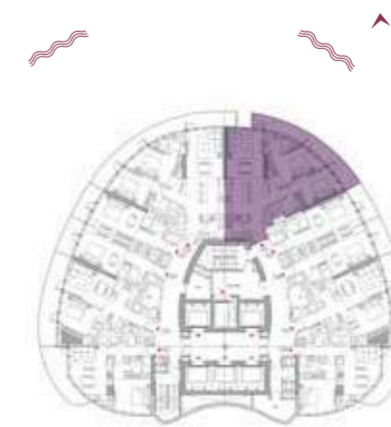
TYPE G1-G3



LEVELS 15-17

# 2-BEDROOM

TYPE G1M-G3M



LEVELS 15-17

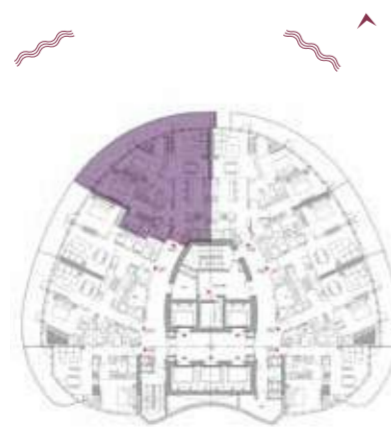
A L T I T U D E B Y D E G R I S O O G O N O

A L T I T U D E B Y D E G R I S O O G O N O



# 2-BEDROOM

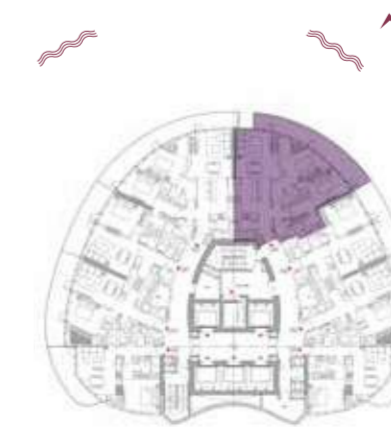
TYPE H1-H3



LEVELS 19-21

# 2-BEDROOM

TYPE H1M-H3M



LEVELS 19-21

A L T I T U D E B Y D E G R I S O O G O O N O

A L T I T U D E B Y D E G R I S O O G O O N O

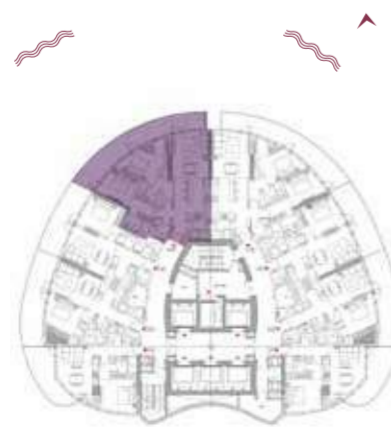
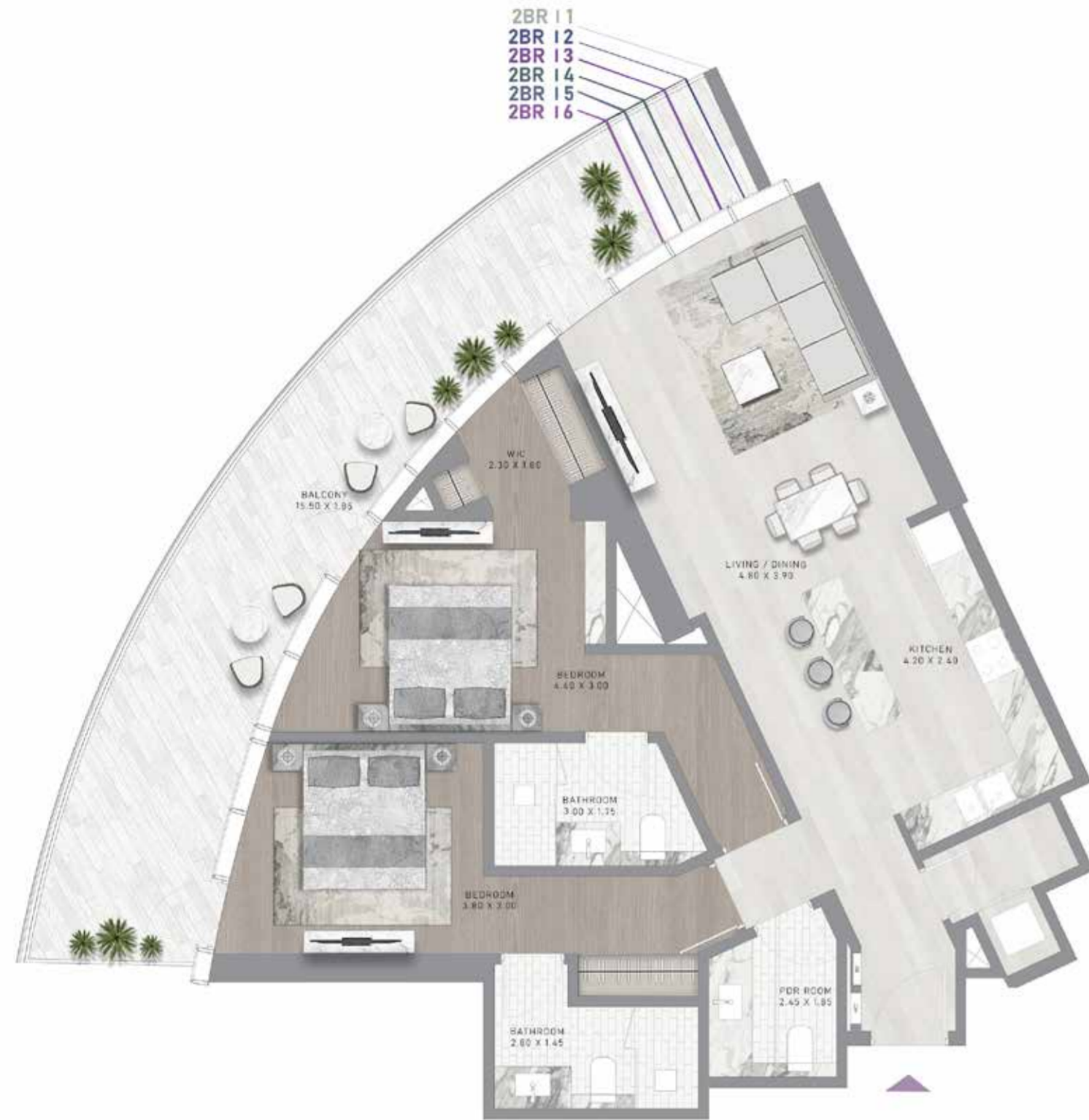


# 2-BEDROOM

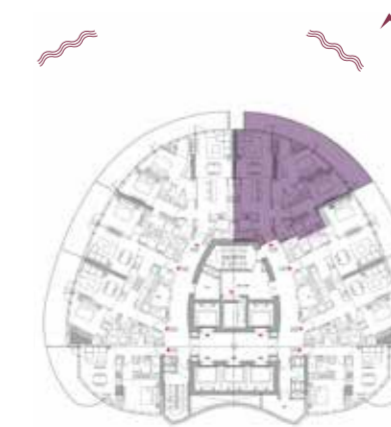
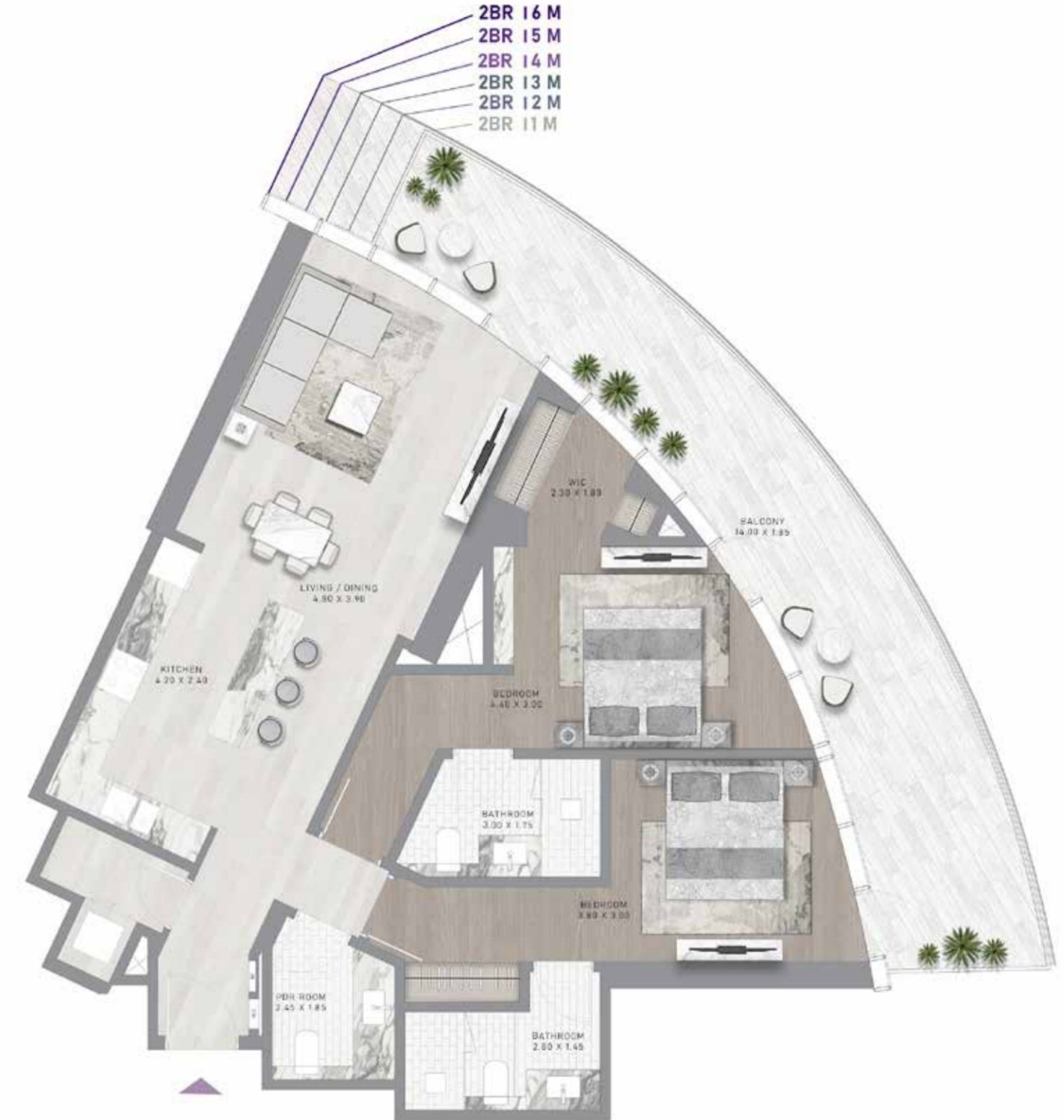
TYPE I1-16

# 2-BEDROOM

TYPE I1M-16M



LEVELS 22-27



LEVELS 22-27

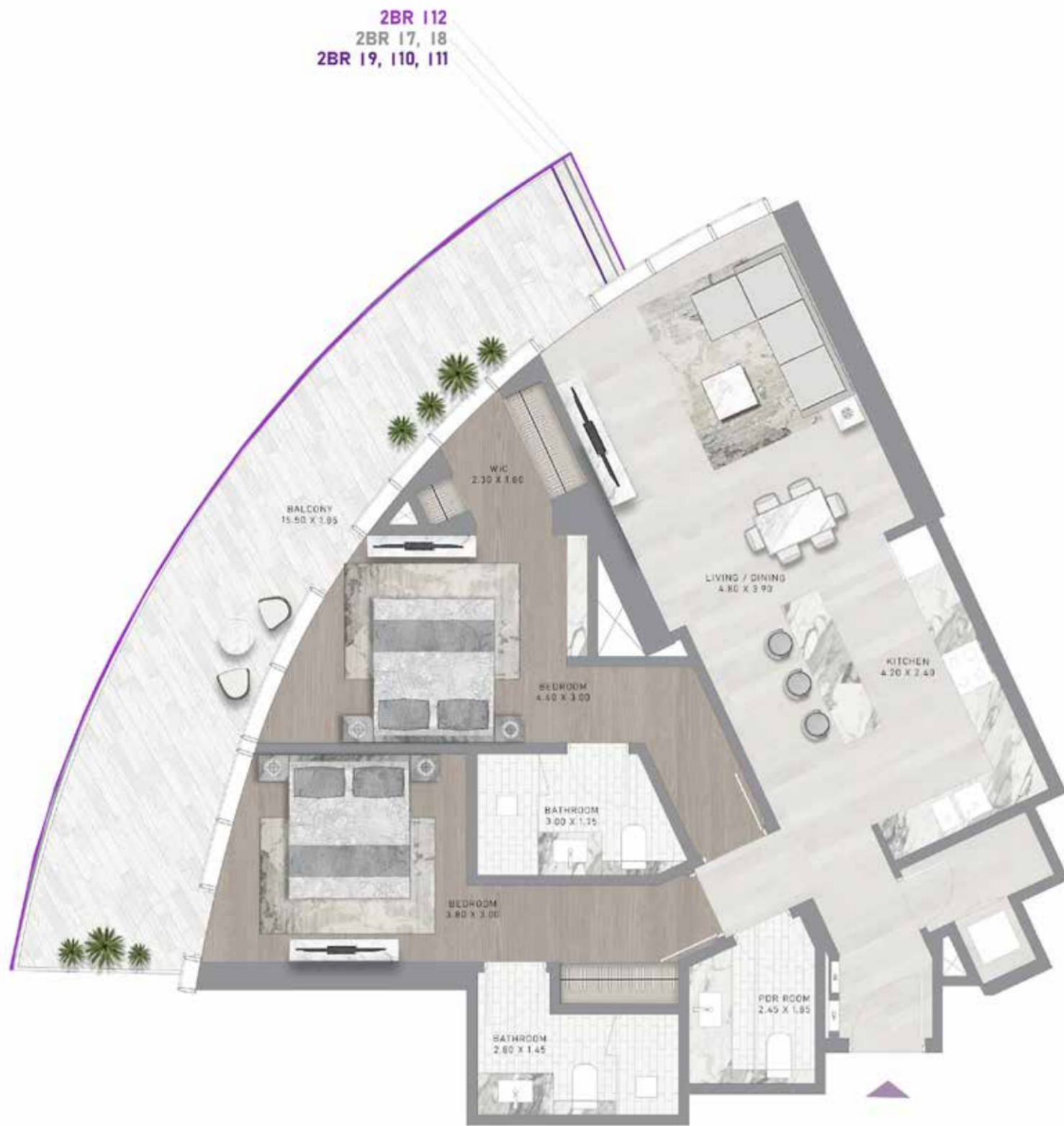
A L T I T U D E B Y D E G R I S O O G O N O

A L T I T U D E B Y D E G R I S O O G O N O

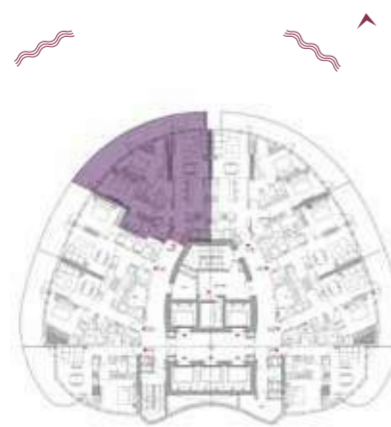


# 2-BEDROOM

TYPE 17-112



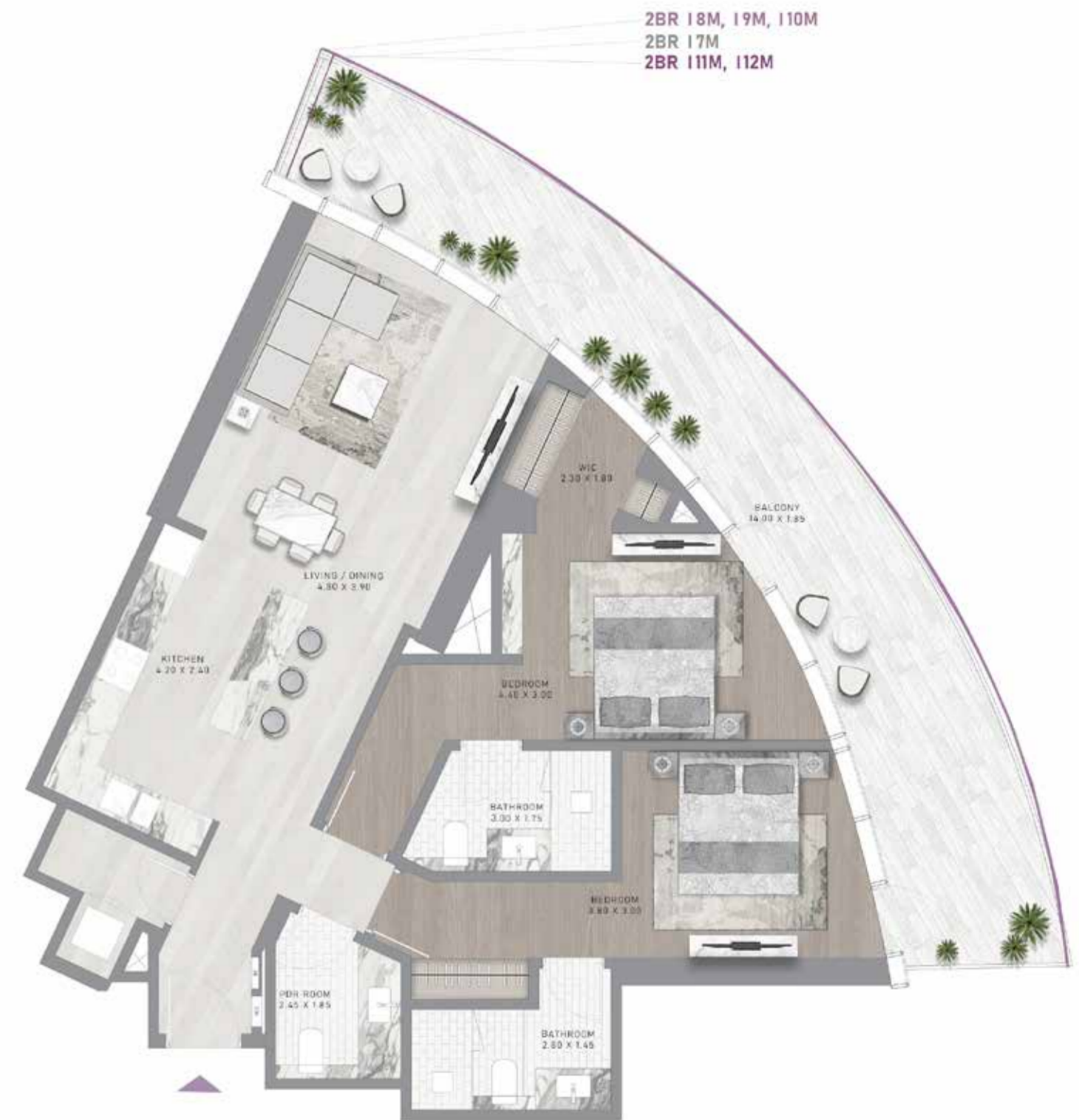
2BR 112  
2BR 17, 18  
2BR 19, 110, 111



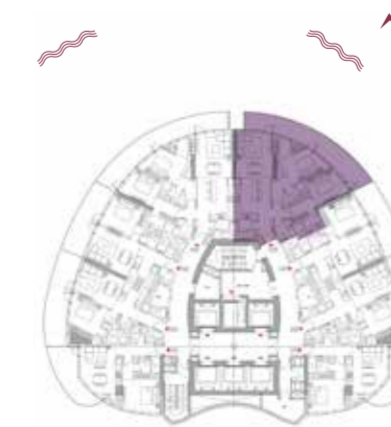
LEVELS 28-33

# 2-BEDROOM

TYPE 17M-112M



2BR 18M, 19M, 110M  
2BR 17M  
2BR 111M, 112M



LEVELS 28-33

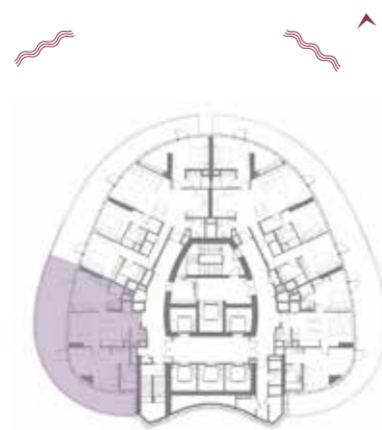
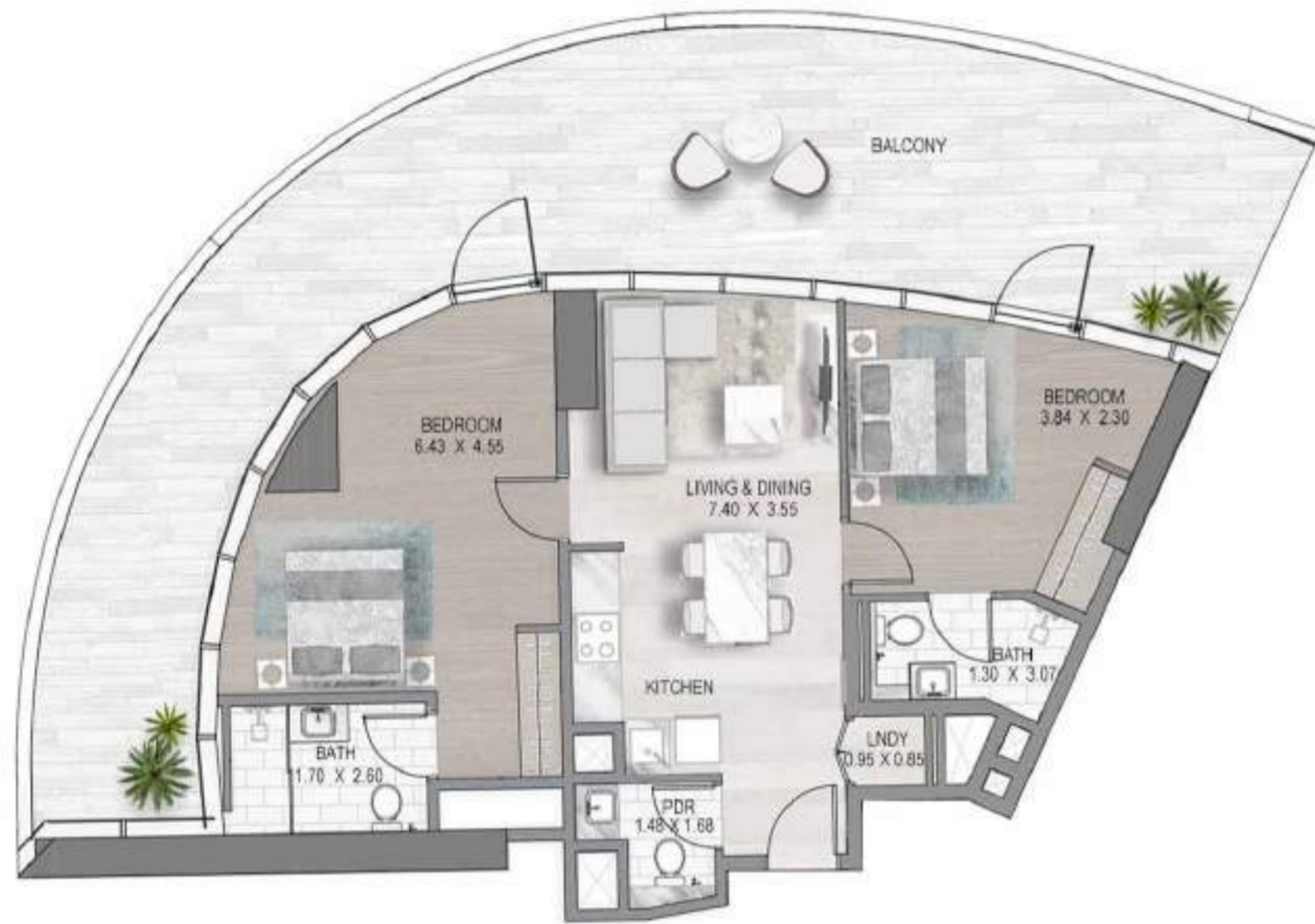
A L T I T U D E B Y D E G R I S O O G O N O

A L T I T U D E B Y D E G R I S O O G O N O



# 2-BEDROOM

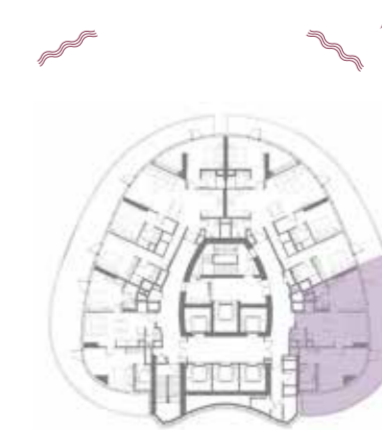
TYPE J1



LEVELS 34-35

# 2-BEDROOM

TYPE J1M



LEVELS 34-35

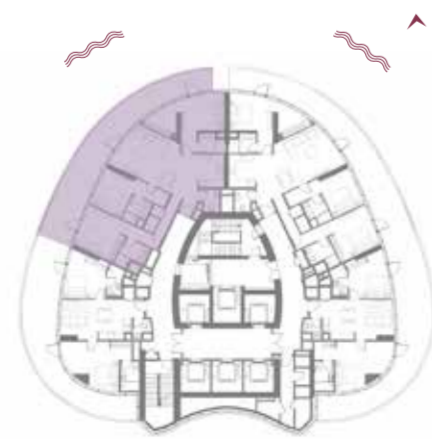
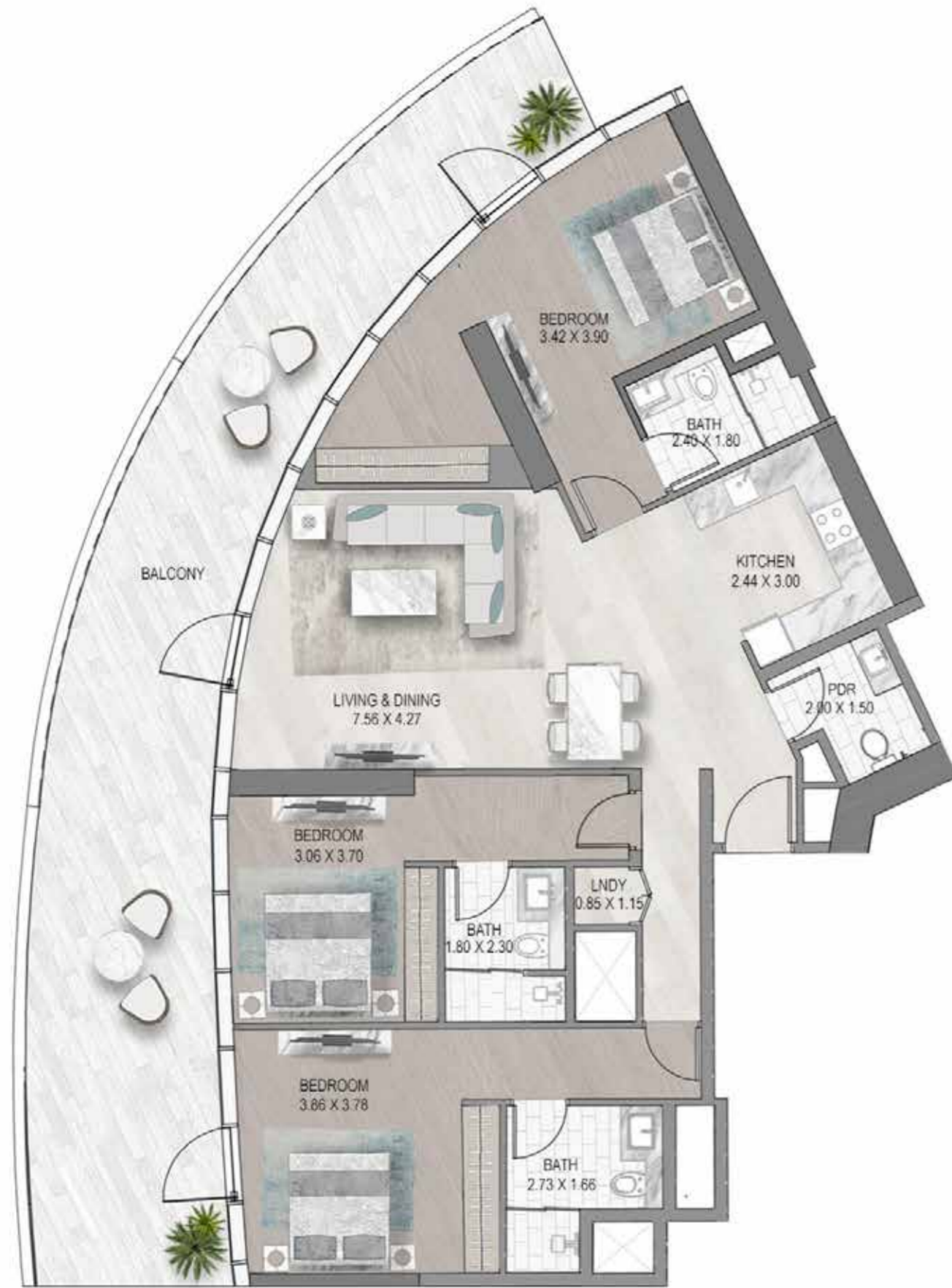
A L T I T U D E B Y D E G R I S O O G O O N O

A L T I T U D E B Y D E G R I S O O G O O N O



# 3-BEDROOM

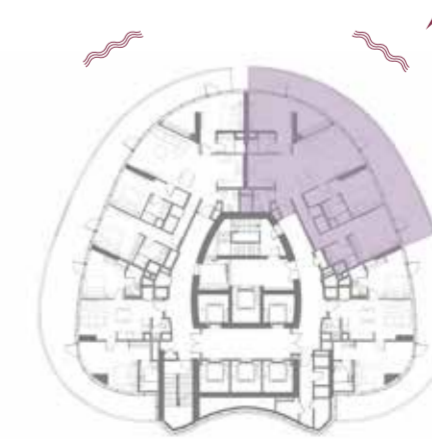
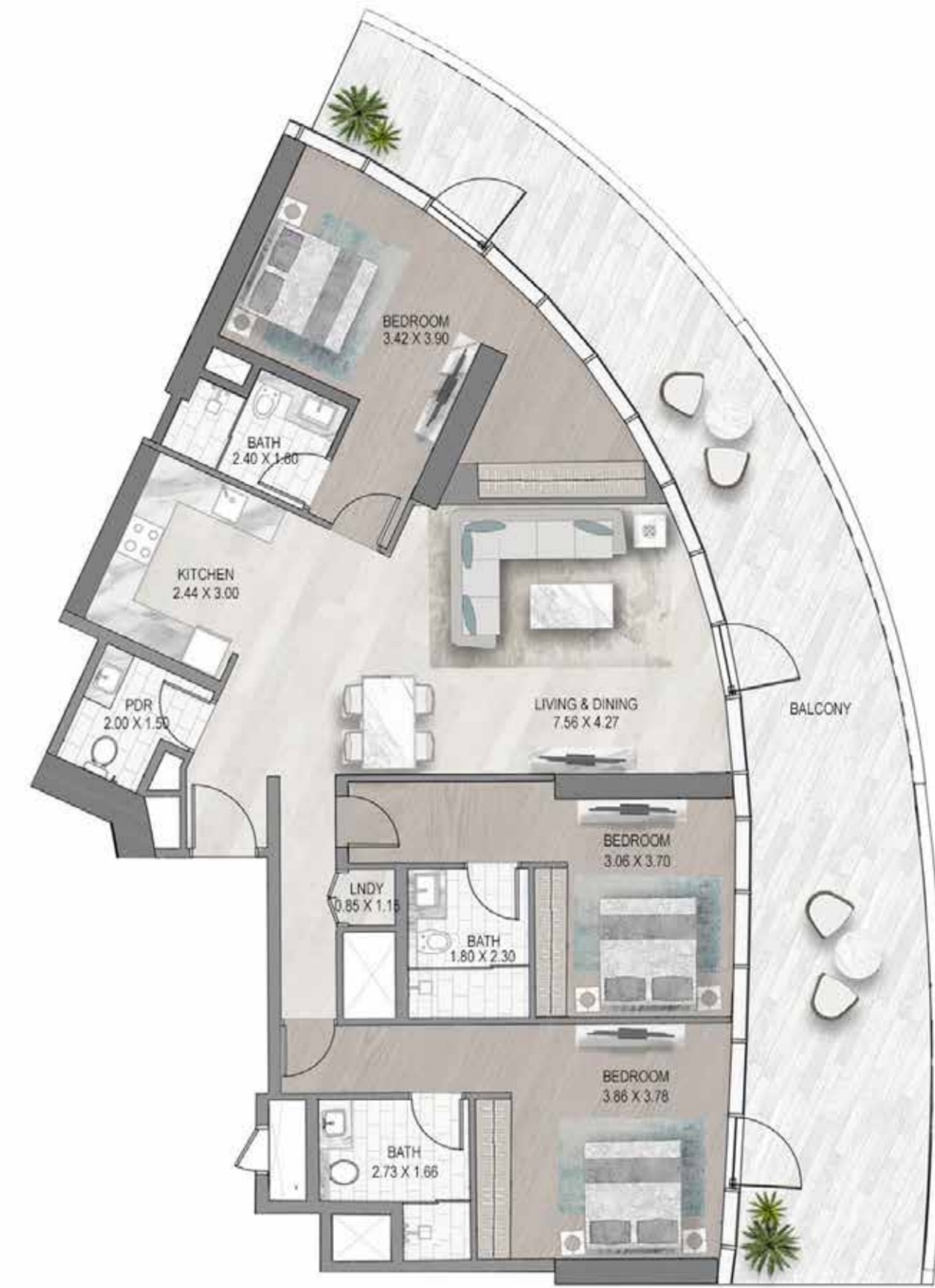
TYPE A1



LEVELS 34-35

# 3-BEDROOM

TYPE A1-M



LEVELS 34-35

A L T I T U D E B Y D E G R I S O O G N O

A L T I T U D E B Y D E G R I S O O G N O



# DAMAC PROPERTIES

LIVE THE LUXURY

DAMAC Properties has been at the forefront of the Middle East's luxury real estate market since 2002, delivering award-winning residential, commercial and leisure properties across the region and around the world, including the UAE, Saudi Arabia, Qatar, Jordan, Lebanon, Iraq, Maldives, Canada, United States and United Kingdom. Since then, the company has delivered approximately 46,000 homes, with a development portfolio of more than 33,000 at various stages of planning and progress.\*

Joining forces with some of the world's most eminent fashion and lifestyle brands, DAMAC has brought new and exciting living concepts to the market with collaborations that include a golf course managed by The Trump Organization, and luxury homes in association with Versace, de GRISOGONO, Cavalli, Just Cavalli, Paramount Hotels & Resorts, Rotana and the Radisson Hotel Group. With a consistent vision and strong momentum, DAMAC Properties is building the next generation of Middle Eastern luxury living.

DAMAC places a great emphasis on philanthropy and corporate social responsibility. The Hussain Sajwani – DAMAC Foundation (HSDF), a joint initiative between DAMAC Group and Hussain Sajwani, announced the launch of the 'Fresh Slate' initiative in collaboration with the Dubai Police General Headquarters, aimed at aiding detainees in Dubai's Punitive and Correctional Institutions who have been charged with petty offences.

The HSDF also pledged AED 5 million for the 1 Billion Meals initiative launched by Vice President and Prime Minister of the UAE, and Ruler of Dubai, His Highness Sheikh Mohammed bin Rashid Al Maktoum, at the start of Ramadan 2022, aimed at providing meals to underprivileged communities in 50 countries across the world.

DAMAC has also supported the vision of Sheikh Mohammed to train one million Arab coders in creating an empowered society through learning and skills development, an initiative that successfully wrapped up in May 2022.

\*As of 30<sup>th</sup> June 2023.

# LUXURY BY APPOINTMENT

CONTACT US AT ANY OF OUR OFFICES OR VISIT [DAMACPROPERTIES.COM](https://damacproperties.com)

## UNITED ARAB EMIRATES

Dubai  
Tel: 800-DAMAC (800-32622)  
E-mail: [dubai@damacgroup.com](mailto:dubai@damacgroup.com)

Park Towers – Sales Centre  
Dubai International Financial Centre

AYKON City – Sales Centre  
Floor 63, Sheikh Zayed Road

DAMAC Hills – Sales Centre  
Golf Veduta, Townhouse TH2

DAMAC Hills – Sales Centre  
Bellavista (Carson Building)

DAMAC Hills 2 – Sales Centre  
Amazonia Cluster, Villa 333

DAMAC Hills 2 – Sales Centre  
Water Town

## QATAR

Building 90, New Solta Area  
Ali bin Abi Talib Street  
Next to Omar bin Al Khattab  
Health Centre  
Tel: +974 44 666 986  
Fax: +974 44 554 576  
E-mail: [doha@damacgroup.com](mailto:doha@damacgroup.com)

## KINGDOM OF SAUDI ARABIA

DAMAC Towers Riyadh  
South Tower  
Olaya District  
King Fahd Road  
PO Box 102460  
Tel: +966 11 835 0300  
E-mail: [ksa@damacgroup.com](mailto:ksa@damacgroup.com)

## TURKEY

Levazım, Mah. Koru Sk.  
Zorlu Centre No. 2  
IC Kapi No. 347, Beşiktaş/İstanbul  
Turkey  
Tel: +90 212 892 0327  
Fax: +90 212 890 7184  
E-mail: [turkey.office@damacgroup.com](mailto:turkey.office@damacgroup.com)

## LEBANON

Unit 1801, 18th Floor  
DAMAC Tower  
Omar Daouk Street  
Mina El Hosn, Beirut Central District  
Tel: +961 81 647 200  
E-mail: [beirut@damacgroup.com](mailto:beirut@damacgroup.com)

## JORDAN

Opposite Abdali Mall Gate #1  
Al Istithmar Street  
Abdali Project, Amman  
Tel: +962 6 510 7000  
Fax: +962 6 565 7896  
E-mail: [amman@damacgroup.com](mailto:amman@damacgroup.com)

## UNITED KINGDOM

DAMAC Tower  
63-71 Bondway London SW8 1SQ  
Tel: +44 (0) 207 590 8050  
[damactower.co.uk](https://damactower.co.uk)

## CHINA | SHANGHAI

Building Name: 3 Corporate Avenue  
Address: 168, Hubin Road, Huangpu District,  
Shanghai  
25F, units 2510-2511



